
Climate Action Training 2024

Travel and Transport

22nd October 2024



native
events

Julie's Bicycle
CREATIVE • CLIMATE • ACTION



the arts
council
comhairle
ealaíon

WELCOME

Housekeeping

- Auto-captioning
- Chat and Q&A functions
- Webinar feedback questions at the end
- Recording and slides available post webinar on Arts Council climate action webpage

<https://www.artscouncil.ie/Arts-in-Ireland/Climate-action/Arts-Council-resources-and-supports/>



Climate Action Training 2024

Travel and Transport

22 October 2024



native
events

Julie's Bicycle

CREATIVE • CLIMATE • ACTION



the arts
council
comhairle
ealaíon

Our team today

Catriona Fallon



Noreen Lucey



native
events

Brecken Byron



native
events



Autumn series training webinars:

17 Sept 10-11am
Getting Started:
Festivals & Production
Companies

24 Sept 10-11am
Getting People on Board:
Festivals & Production
Companies

1 Oct 10-11am
Developing Action Plans:
Festivals & Production
Companies

22 Oct 10-11am
Travel and transport

15 Oct 10-11am
Audience travel

8 Oct 10-11am
Materials and procurement
Festivals & Production
Companies

29 Oct 10-11am
Content, programming and
communications

5 Nov 10-11am
Energy for festivals

12 Nov 10-11am
Climate adaptation

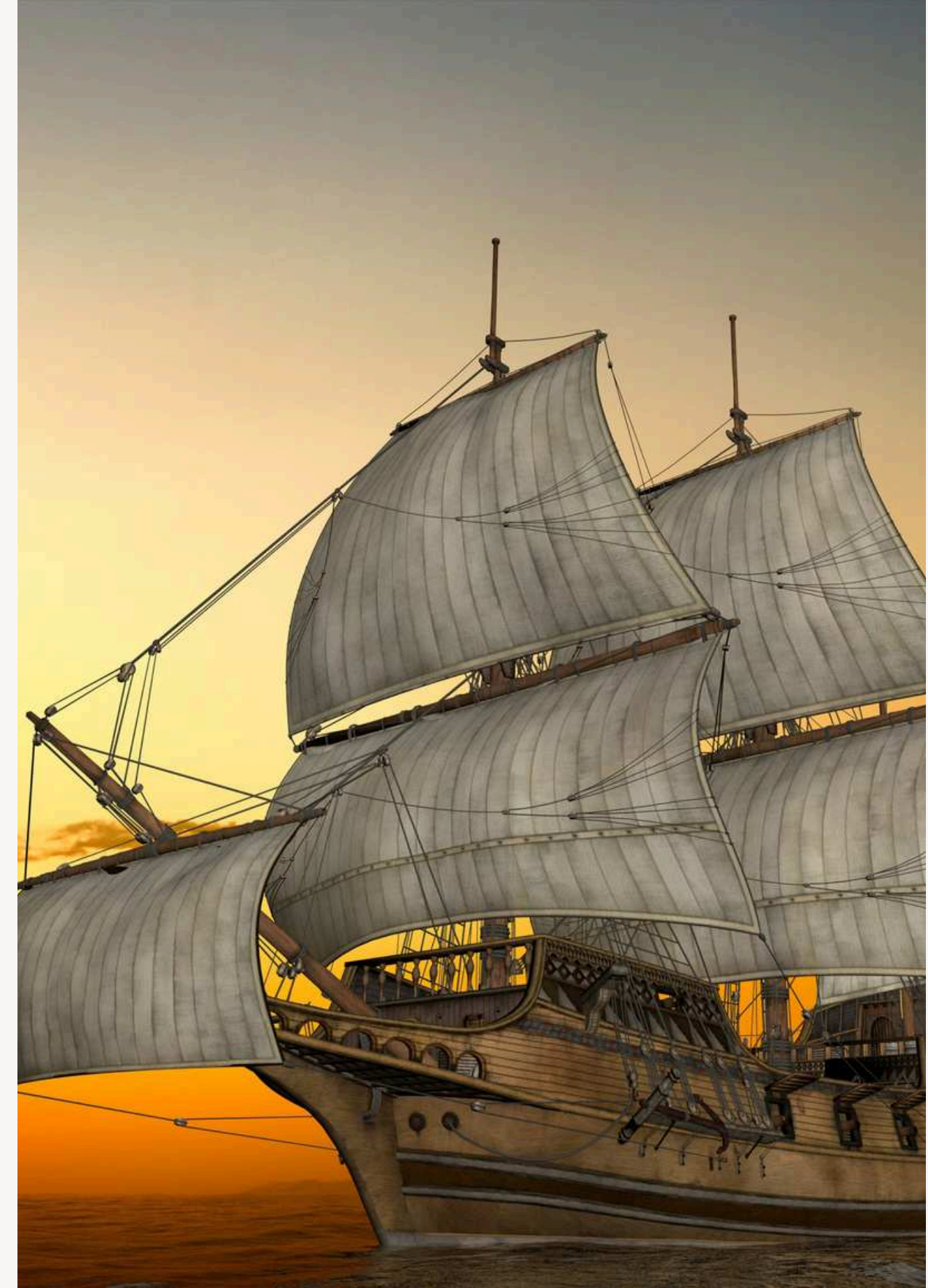
If you didn't join the previous sessions you can access the recordings and slides at:

<https://www.arts council.ie/ArtsinIreland/Climateaction/Arts Councilresourcesandsupports/>

What is the focus of today's session?

Understanding and reducing the impacts of Travel and Transport in the arts sector at a time of climate emergency...

Today's session does not include Audience Travel - this was included in last week's webinar available on the Arts Council's website at the link provided earlier.



What will we cover?

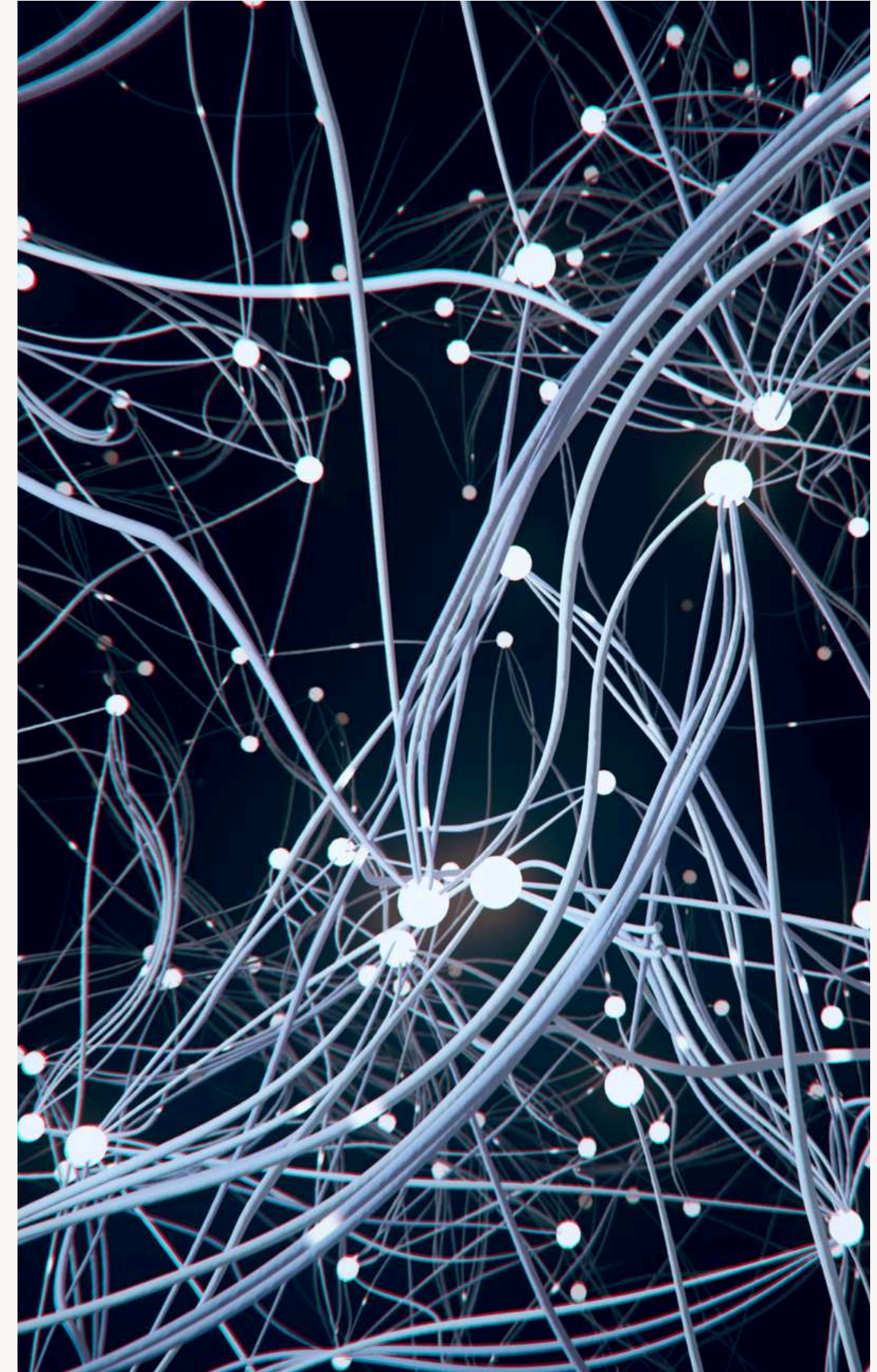
- Context (National & International)
- Context (Arts Sector – importance of travel)
- Travel and transport by activity/organisation type
- Example – Touring
- Solutions and obstacles
- Key tools/approaches: Measurement and Travel Policy
- Case Studies
- Resources



Greening how we travel, and how we transport goods, is complex; there are no easy answers to how we can make that more sustainable.

Mobility is seen as a critical component of cultural life: For **artists, performers, audiences, technical and production crews, programmers, and curators**, travel is seen as key to how they work. Transporting sets and artworks is another significant element....

We can see that travel is vital to the whole cultural landscape and ecology of the arts sector - it can be an emotional issue. And yet, travel and transport also contributes significantly to climate change. Decarbonising transport and travel (removing Green House Gases) is very challenging.



Transport & Travel

Context - International & National



Context (International)

Transport emissions continue to grow globally, even as modes of travel (cars, trains, planes) become more energy efficient.

Improvements in technology are not enough - we need changes in behaviour - less air travel, more and better public transport and active travel.

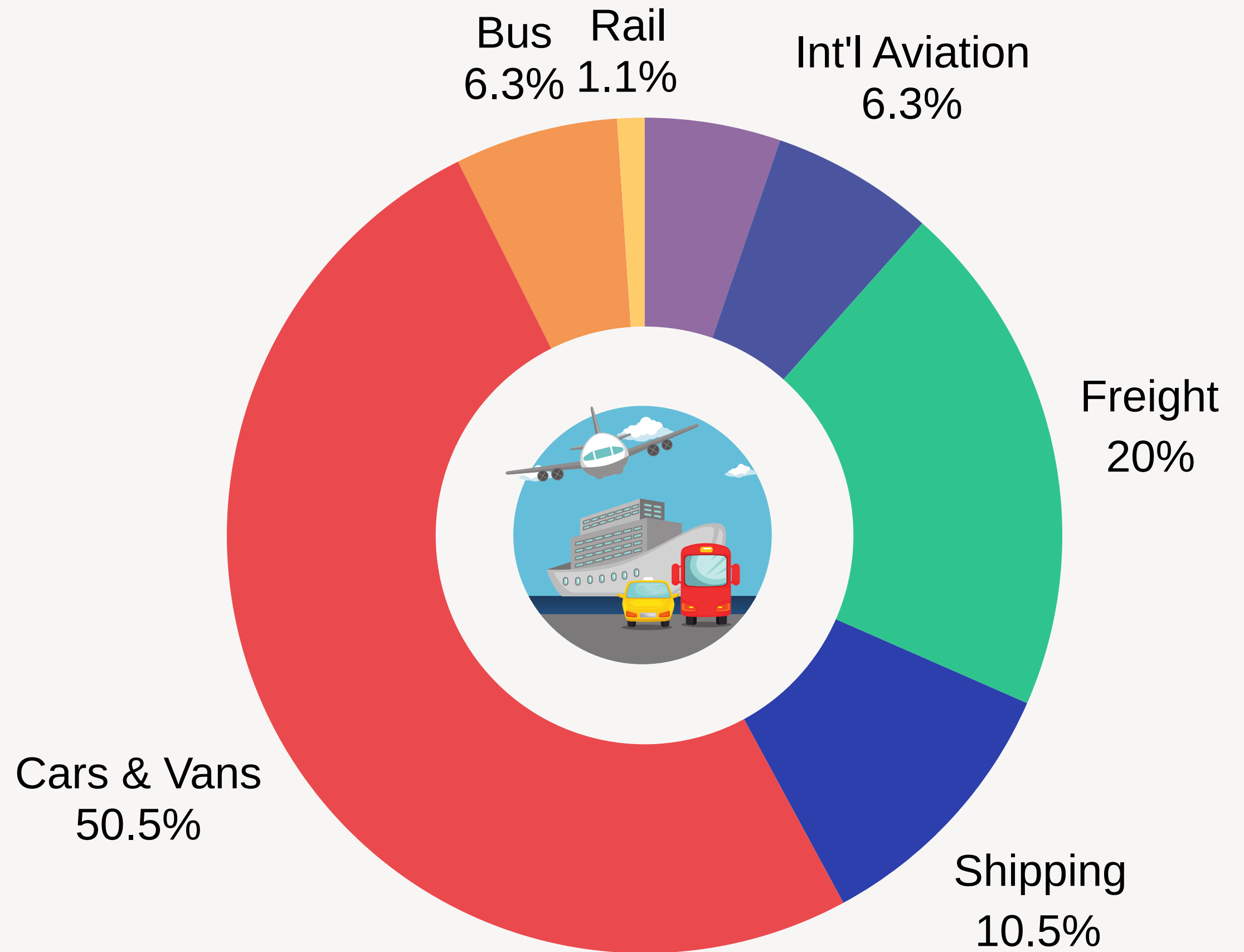
(3% increase in 2022 according to the International Energy Agency)



Context (International)

Transport Emissions Globally

Estimated share of CO2 emissions in the transportation sector worldwide in 2022 by transport type

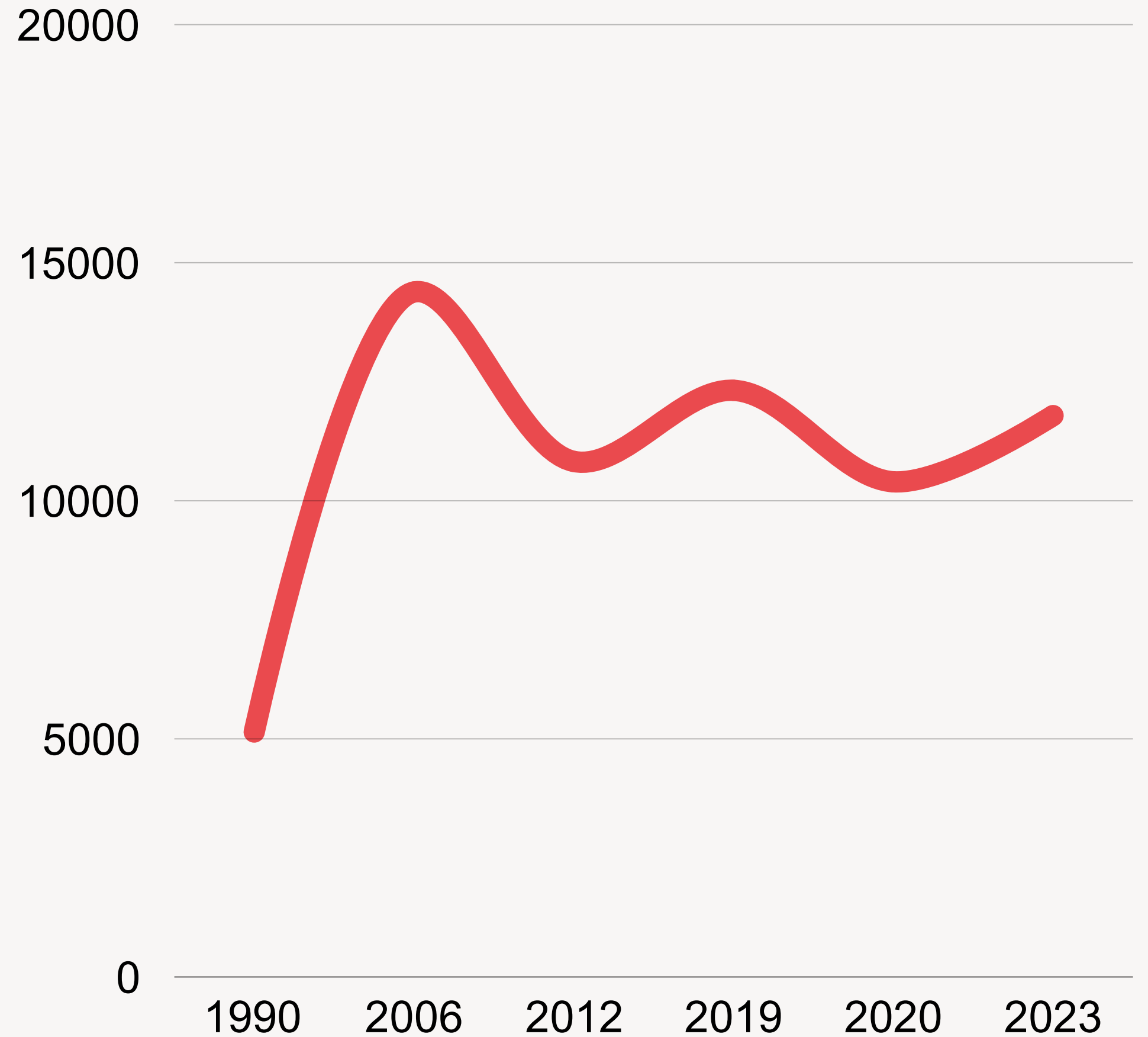


Context (National)

Transport Emissions Ireland 1990-2023

Between 1990 and 2023,
Transport shows the greatest
overall increase of GHG
emissions at 129.2%.

Transport emissions rose from 5,143.3
kt CO₂ eq in 1990 to 11,790.8 kt CO₂
eq in 2023, with road transport
increasing by 133.6%.



Context (National)

Emissions associated with travel in Ireland - 2023



Transport
21.4%

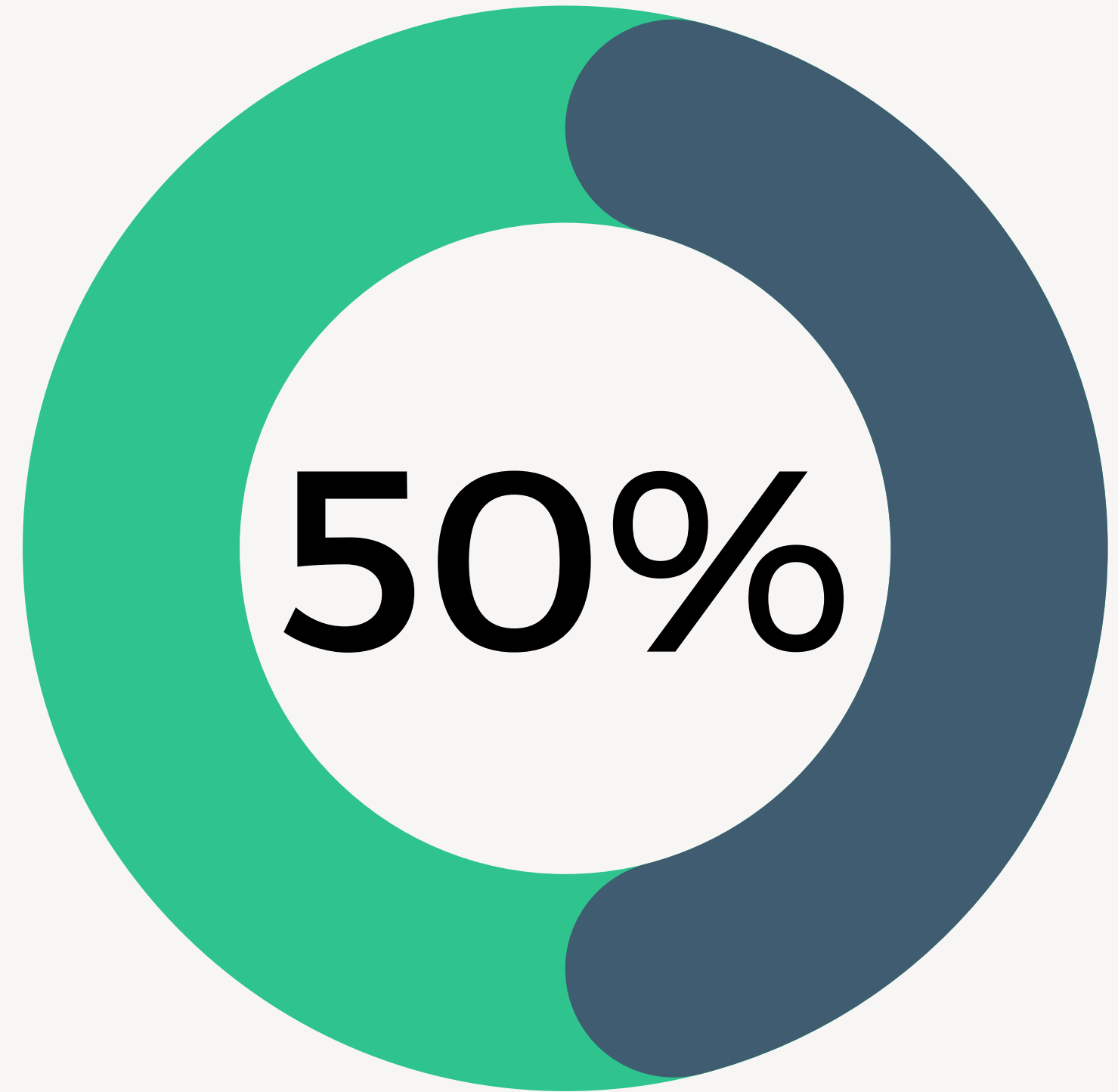
Transport emissions in Ireland rose by 2.7% for the first quarter of 2024

Source: EPA (Environmental Protection Agency)

Context (National)

Climate Action Plan Goals

As part of its net-zero goal, Ireland has committed to **halve transport-related carbon emissions by 2030 compared to 2018** (excluding international aviation and maritime).



Context (National)

The essential focus of the government's Climate Action Plans is two-fold:

- **Efficiency and electrification of travel**
- **A move to greater use of public transport and active travel**

The first is insufficient without the second



Transport & Travel

Travel and transport emissions by activity / organisation type

- Production Companies
- Theatres & Arts Centres
- Galleries & Museums
- Festivals (Green Field Site)
- Festivals (Venue Based)
- Resource organisations
- Artists' Studios

Focus on the travel you pay for and have some control over...

Transport & Travel

Travel and transport emissions by activity / organisation type

- Production Companies
- Theatres & Arts Centres
- Galleries & Museums
- Festivals (Green Field Site)
- Festivals (Venue Based)
- Resource organisations
- Artists' Studios

Important to acknowledge all of the good work currently being undertaken to reduce travel impacts, particularly by festivals

Travel Impacts by Organisational Type

Theatres and Arts Centres:

- Artistic Director (to source new work at festivals etc)
- Artists-in-residence
- General business travel by other staff
- Networking

Resource Organisations:

- Networking and business travel
- Supporting artists to attend events & festivals

Galleries:

- Touring: Transporting artworks and curator travel
- Artists travel for exhibition purposes (other festivals & events)
- General business travel and networking

Artists' Studios:

- General business travel and networking



Travel Impacts by Organisational Type

Festivals (Green Field Site):

- Performers, (including international travel)
- Crew
- Suppliers and contractors
- Festival programmers travelling to source new work and to network

Festivals (Venue Based):

- Performers, (particularly international travel)
- Festival programmers travelling to source new work and to network

Production Companies:

- Touring: Cast & Crew
- Transport set, tech, props & costumes
- General Business travel (networking)



Transport & Travel

Deep Dive - Touring

GREENER TOURING PROJECT

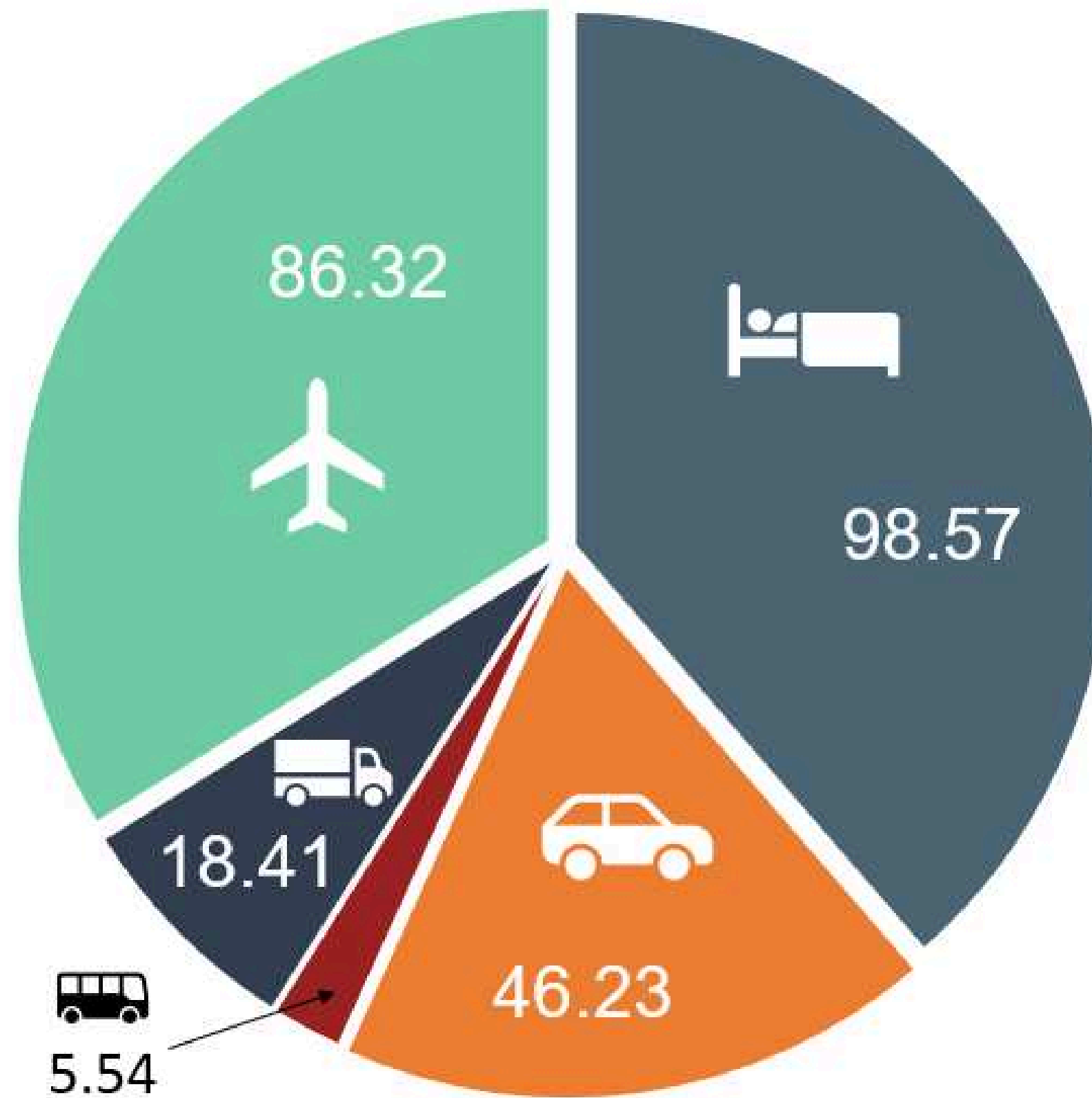
- Six production companies
- 12 touring productions
- Project ran 2022-23



MEASURING TRAVEL:

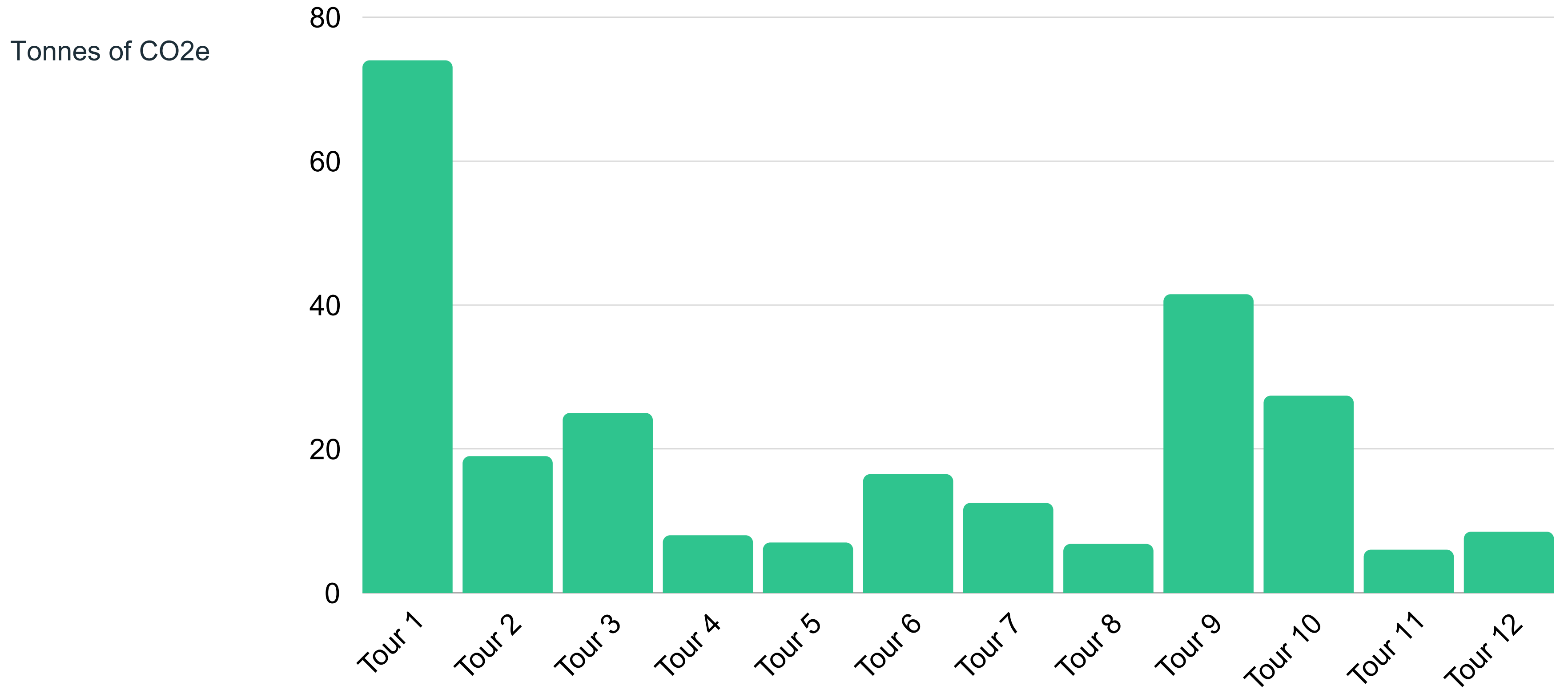
Greener Touring Project

Total: 253.34 Tonnes of CO₂e



Tonnes of CO₂e

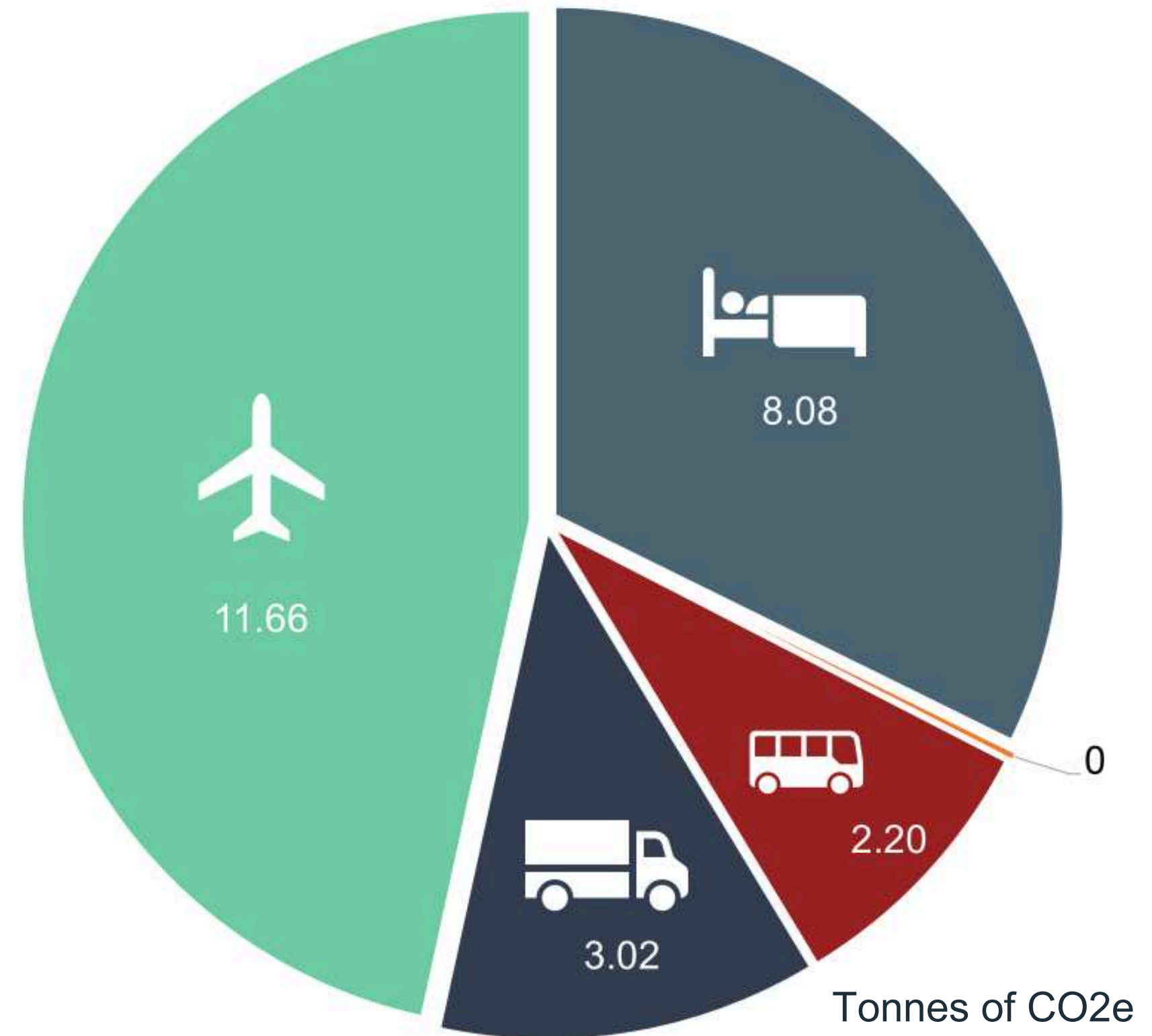
MEASURING TRAVEL & ACCOMMODATION (Greener Touring Project):



MEASURING TRAVEL (And Accommodation):

Example - A **dance production company** uses travel data to set a reduction target for emissions associated with travel...

- National Tour
- 12 venues
- 19 performers
- 4 crew
- Large set

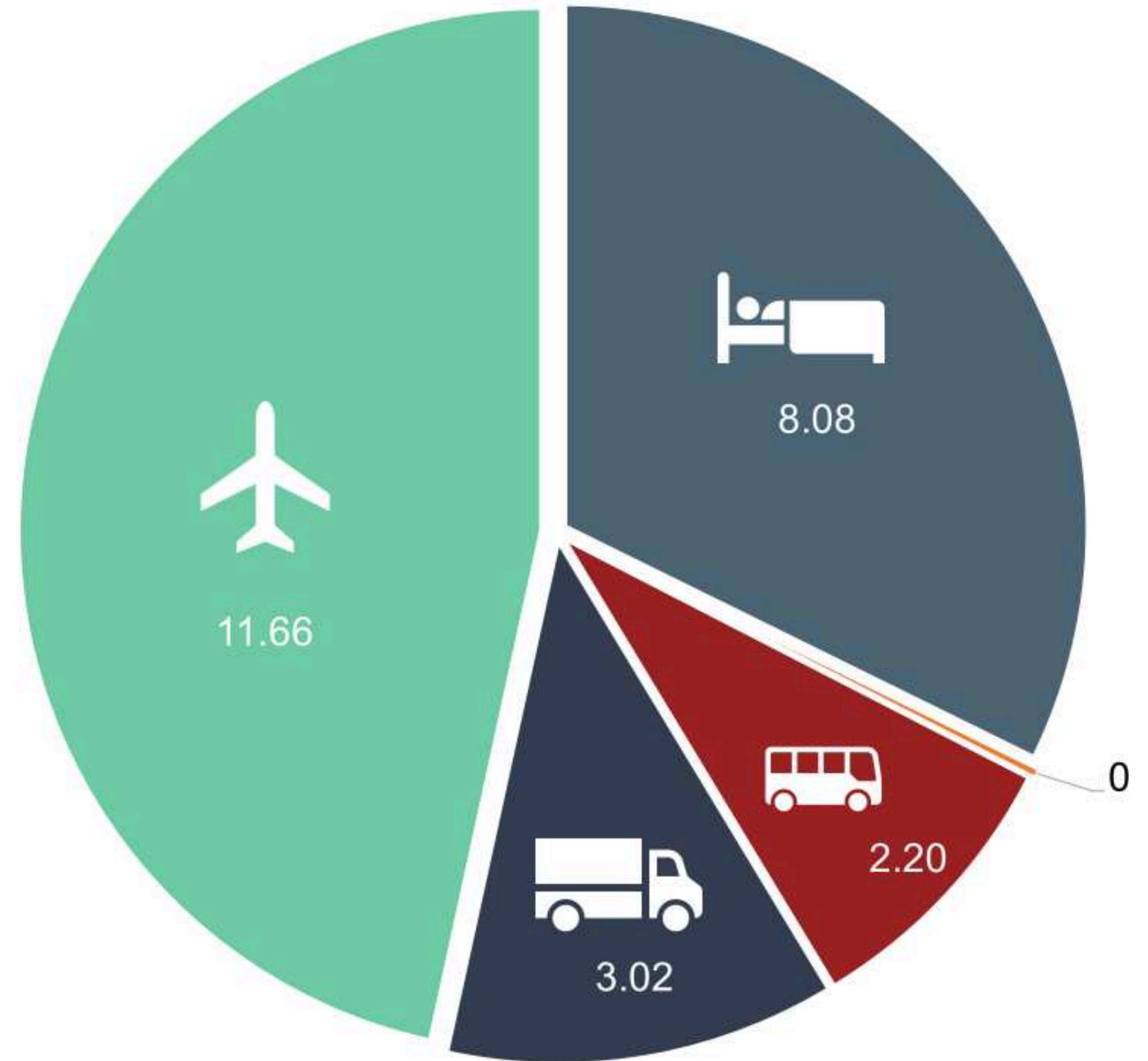


MEASURING TRAVEL:

Example - A **dance production company** uses travel data to set a reduction target for emissions associated with travel...

Emissions for travel, transport and accommodation for a national tour amounted to:

25.01 Tonnes of CO₂e

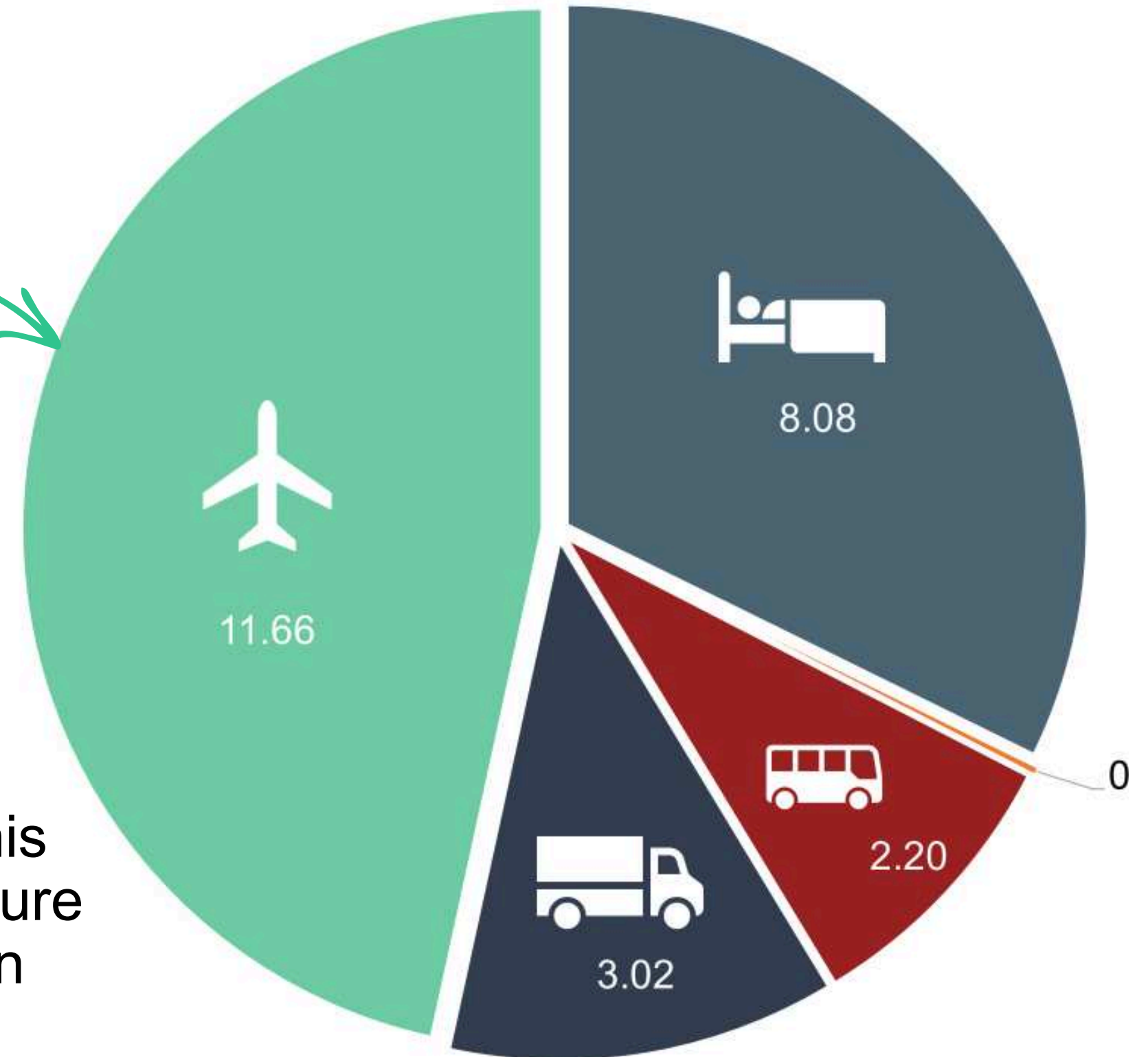


MEASURING TRAVEL:

Example - A **dance production company** uses travel data to set a reduction target for emissions associated with travel...

Three long haul return flights –
8.95 Tonnes of CO₂e

Measuring and understanding emissions allowed this company to make more informed decisions about future tours. This fed into their action plan to set a cap on emissions from flights and reduce this annually.



How does the impact of touring compare with running a venue?

Comparing the Greening Venue Project with the Greener Touring Project

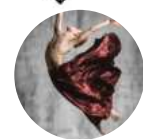


Comparing the Greening Venue Project with the Greener Touring Project

The tour with the biggest emissions was an international tour. This was the equivalent of three times the venue with the lowest emissions.



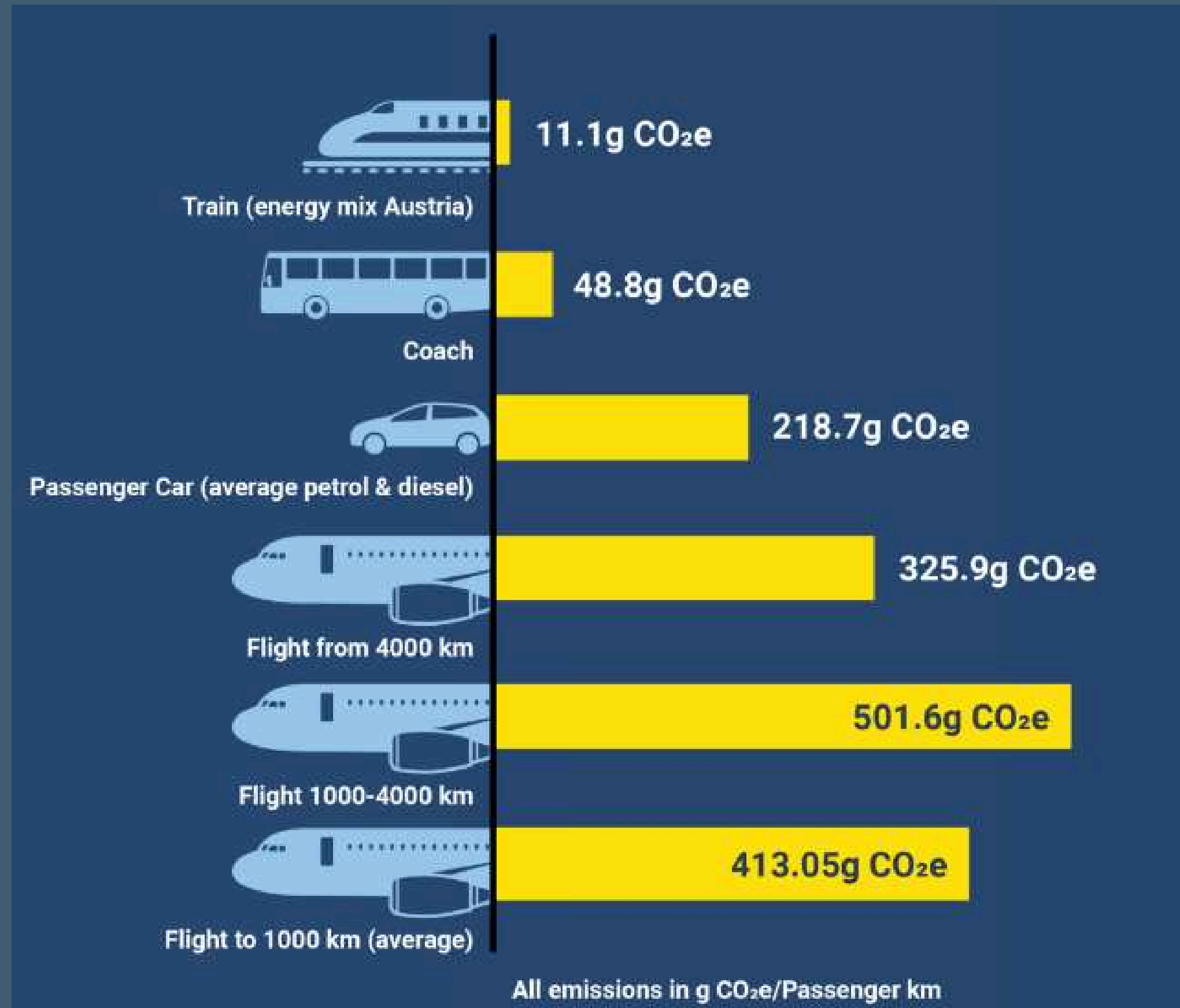
6.2 Tonnes
of CO₂e



Venue with
the lowest
emissions

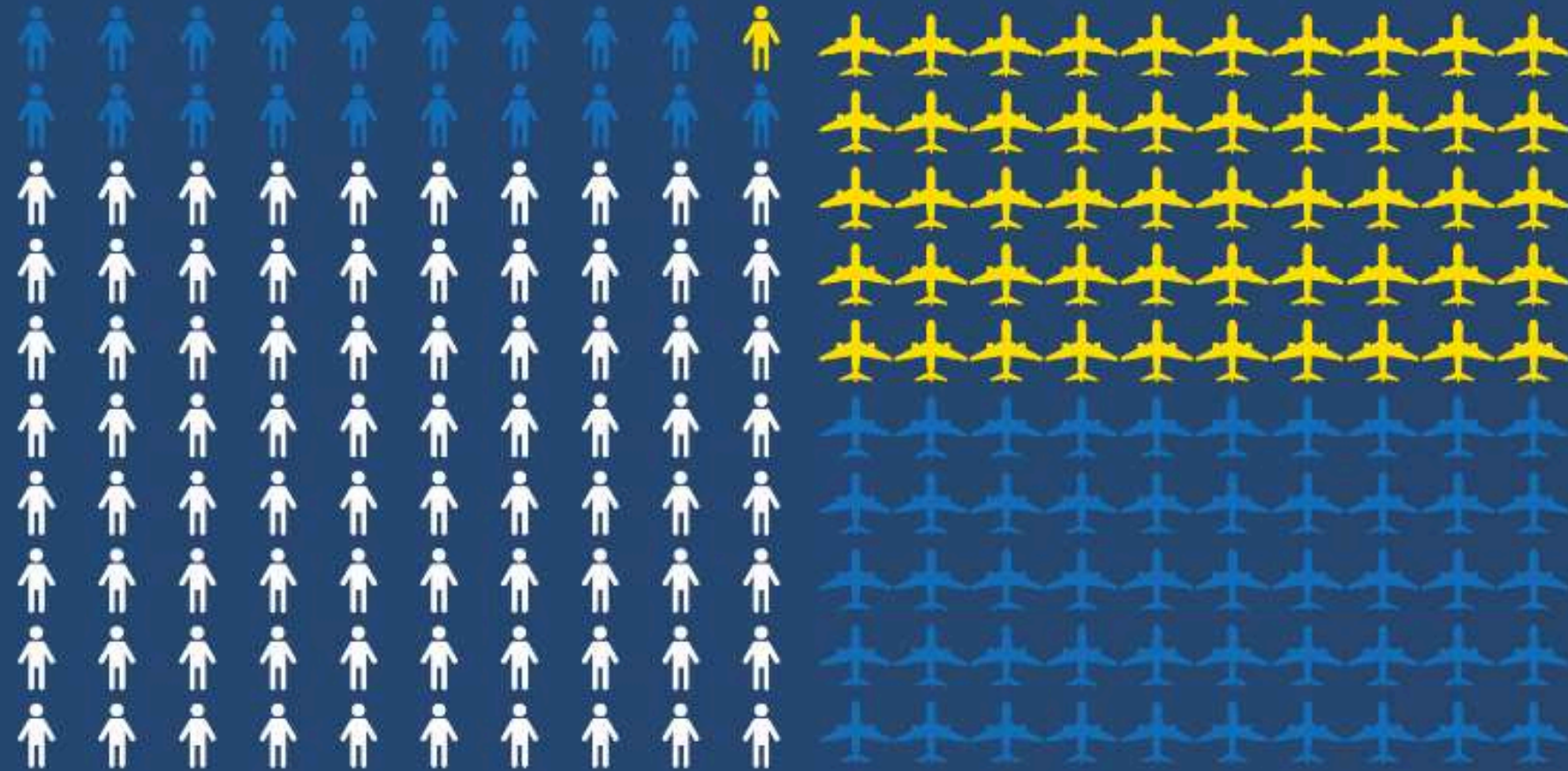
A word about air travel.....





From www.stay-grounded.org

A word about climate justice and flying....



Only **1%** of the **world's population**



causes **50%** of **commercial aviation emissions**



while more than **80%** of the world's population **have never set foot on an aeroplane.**

From www.staygrounded.org

Transport & Travel - Solutions

Possible Solutions...these will be unique to each organisation

Some challenges and roadblocks

All arts organisations will benefit from measuring their travel and transport and creating a Travel Policy.



Possible Solutions

How to reduce emissions associated with travel & transport for TOURING

Cast: Identify opportunities for increased use of public transport, consider car pooling

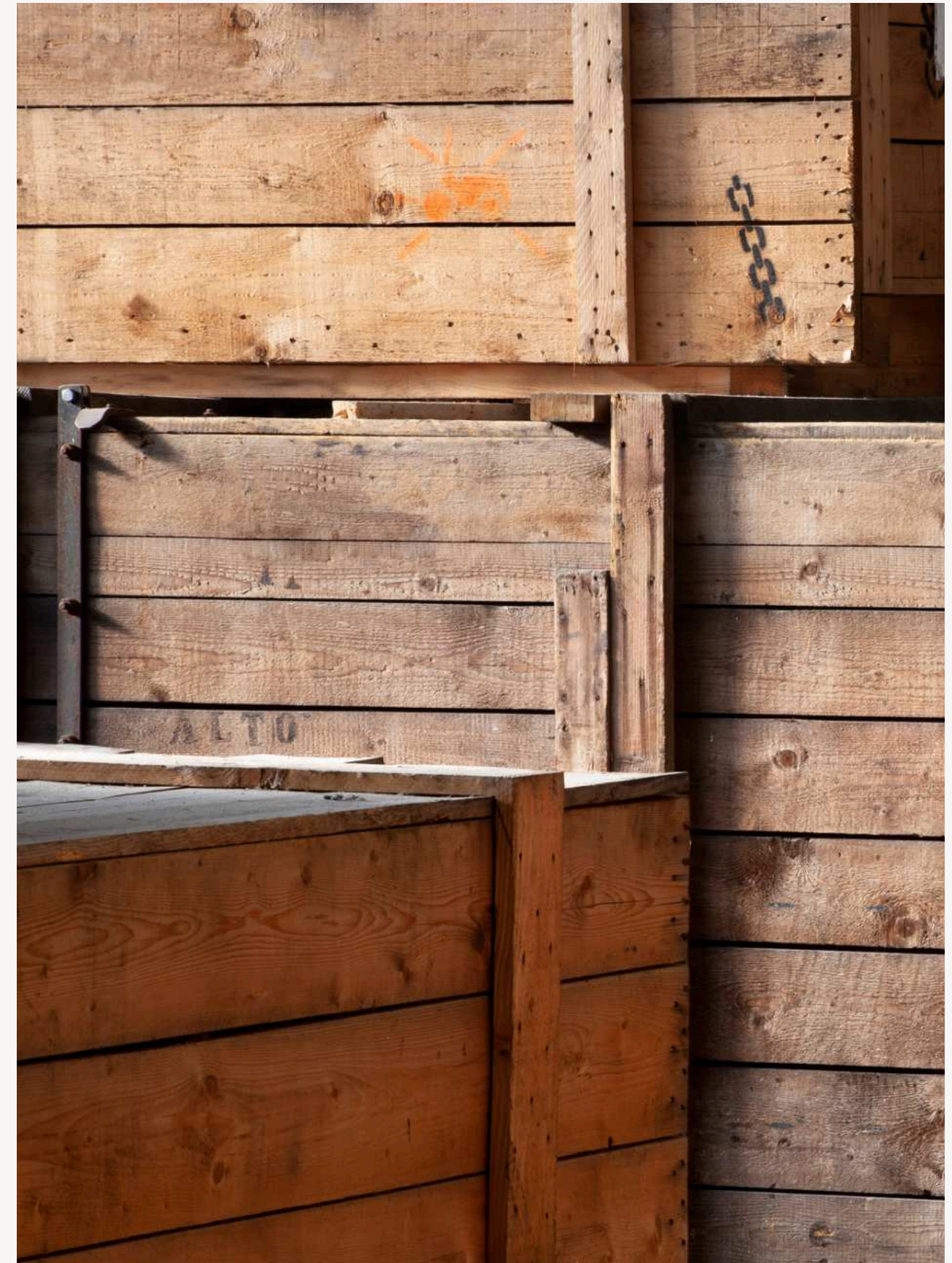
Support slow travel

Electric Minibus (purchase or hire)

Route: Work to identify most efficient tour route, maximise each location

Freight: Set freight limits for sets (weight), use Electric Vehicles for shorter journeys, consider rail freight, use shipping rather than transport by air

Challenges: Poor public transport options, financial and budgetary implications, longer lead in time for freight, more time for slow travel, inconvenience for personal life.



Possible Solutions

How to reduce emissions associated with travel & transport for VISUAL ARTS

Transporting Artworks:

Tour artworks by sea rather than by air (generally cheaper)

Use zero or low emissions vehicles for local transport

Work to identify most efficient tour route,

Set freight limits

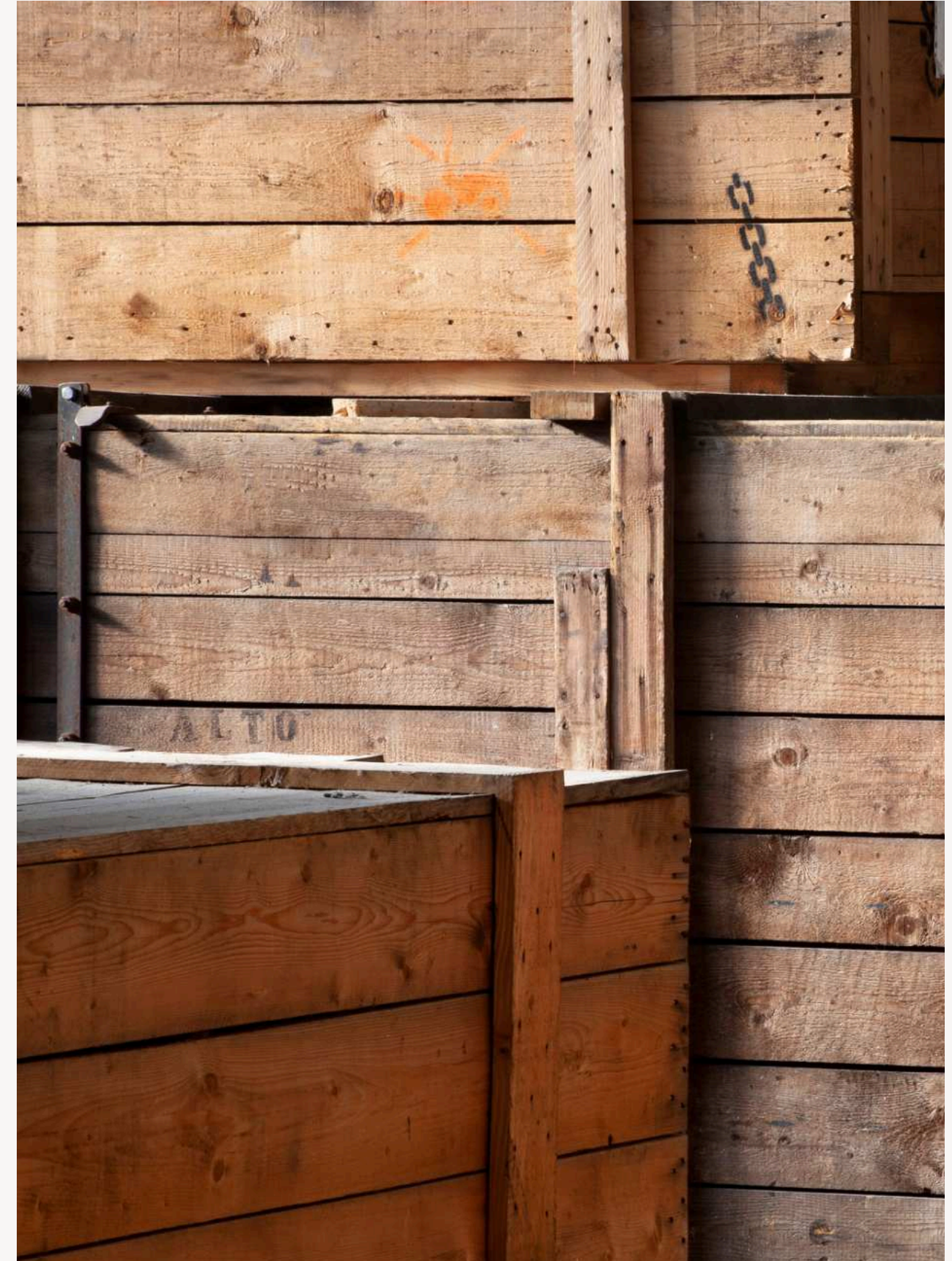
Challenges:

Longer lead in times

Not suitable for all work, particularly fragile artworks

More unpredictable journey times

May limit exhibition scope



Possible Solutions

How to reduce emissions associated with travel & transport for FESTIVALS

Performers: Set a cap on emissions associated with international travel of artists for each festival.

Support slow travel where possible

Eliminate domestic flights

Sharing: Work with other festivals to share work so that artists or companies are performing in a number of locations.

Freight: Set freight limits for sets (weight), use Electric Vehicles for shorter journeys, consider rail freight, use shipping rather than transport by air

Challenges: Poor public transport options, financial and budgetary implications, longer lead in time for freight, more time for slow travel, inconvenience for personal life.



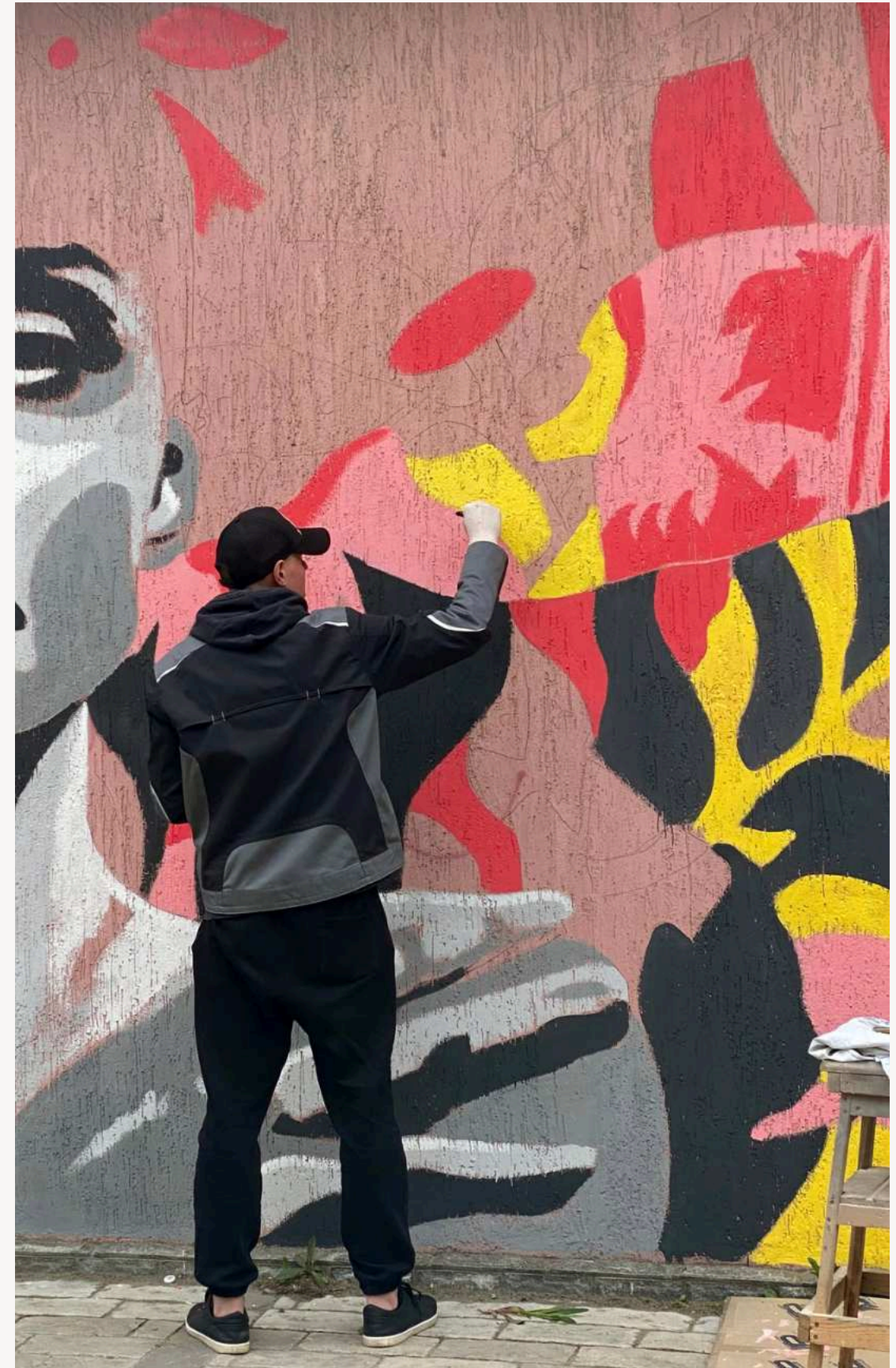
Possible Solutions

How to reduce emissions associated with travel & transport for ALL OTHER organisations: theatres and arts centres, resource organisations, artists' studios

- Work with other artistic directors and programmers to share contacts for potential new work (avoid duplication of travel)
- Consider bringing artists from parts of the world experiencing the worst of climate change, 'front line voices'.
- Set a limit to the annual amount of international air travel.
- Consider slow travel methods for travelling to and from Western Europe.

Challenges:

Financial and budgetary implications, more time required for slow travel, inconvenience for personal life, less exposure to other cultural experiences



Transport & Travel - Gallery Climate Coalition

“In order to reach the 2030 CO2e reduction targets, there needs to be a sector wide reduction in overall volumes of shipping.”

“The main hurdles to overcome in this area are the implications of longer lead times on schedules.

Simple and cost-effective changes to local transportation methods, such as zero and low emissions vehicles will reduce emissions and local pollution.”



Transport & Travel

Where to begin:

Measurement Tools and creating a Travel Policy

ZOOM POLL 2

MEASURING TRAVEL:

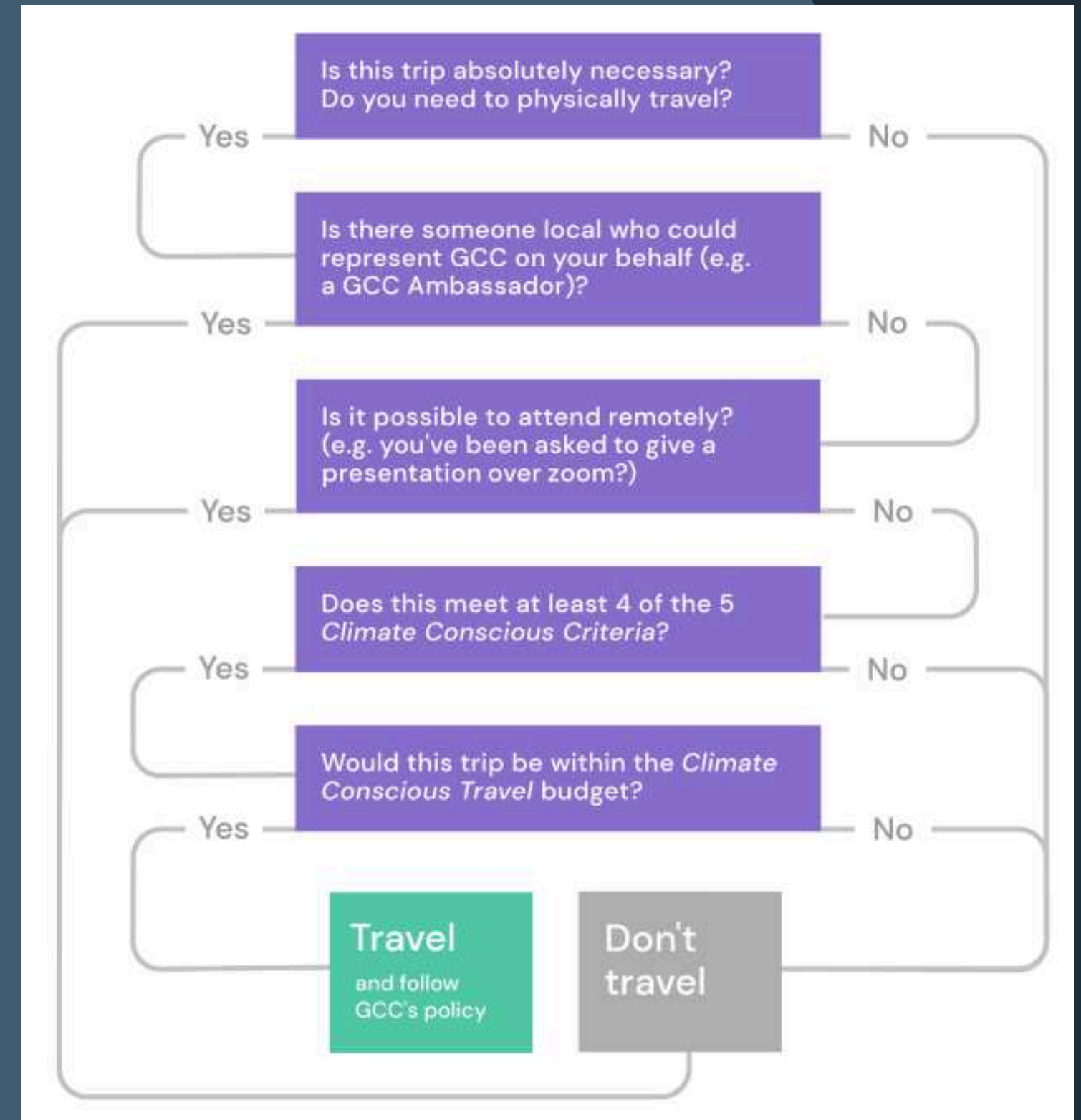
Converting distances to Kg of CO2e

| TRAVEL RECORD SHEET & EMISSIONS CONVERTER | | | | | | | | | | | | | | |
|--|------------------|--------|--------|-------------|-----------------------|----------------|------------------------|------------|------------|--------------|----------|---------------|---------|-------|
| User Notes: Carbon Conversion Factors are provided in line 7. These are taken from https://www.gov.uk/government/publications/greenhouse-gas-reporting-conversion-factors-2023 | | | | | | | | | | | | | | |
| To use this calculator, note the distance travelled in column G . Then, using the relevant column for the mode of travel taken, multiply the distance by the relevant conversion factor as per the example provided | | | | | | | | | | | | | | |
| EG. The distance travelled in the first example was 45km. 45km is noted in column G. The journey was made by electric car. | | | | | | | | | | | | | | |
| The formula in column J (Electric Car) multiplies column G (the distance) by the conversion factor for Evs (J8) to calculate emissions of 11.77kg of CO2e. | | | | | | | | | | | | | | |
| Date | Person | From | To | Purpose | Project | Distance in Km | Distance in kilometres | | | | | | | |
| | | | | | | | | | | Train | Train | | | |
| | | | | | | | | Petrol Car | Diesel Car | Electric Car | National | International | Bus | Coach |
| Conversion Factor | | | | | | | | 0.17726 | 0.16807 | 0.04625 | 0.03546 | 0.00446 | 0.10846 | 0.027 |
| January | Example: Siobhan | Dingle | Tralee | Green Event | Arts Council Training | 45 | | | | 2.08 | | | | |
| | | Dingle | Dublin | Green Event | Arts Council Training | 332 | | | | | 11.77 | | | |
| TOTALS: | | | | | | | | 0.00 | 0.00 | 2.08 | 11.77 | 0.00 | 0.00 | 0.00 |
| February | | | | | | | | 0.00 | 0.00 | 0.00 | 0.00 | | 0.00 | |
| TOTALS: | | | | | | | | 0.00 | 0.00 | 0.00 | 0.00 | 0.00 | 0.00 | 0.00 |

Travel Policy - What to include...

Commitments and approach to:

- **Artists' Travel**
 - Consider offering slow travel options
 - Don't expense internal flights (here or abroad)
- **Business Travel:**
 - For each journey, consider whether travel is actually necessary (see the GCC Climate Conscious Travel Tree)
 - Don't expense internal flights
 - Consider offering slow travel options
- **Staff Commuting:**
 - Flexible working, remote working, bike schemes and facilities for cyclists
- **Audience Travel:**
 - Provide information on sustainable travel options
 - Schedule events at times convenient for public transport
 - Survey audiences to gather data on their travel



Travel Policy - Example

Creative Carbon Scotland's Travel Policy covers:

1. Local Transport / Active Travel
2. Increased Video Conferencing
3. Public Transport
4. Cycling
5. UK and Europe by Rail
6. Calculating Expenses and Emissions
7. Long Haul Flying
8. Minimal Taxi Use
9. A Last Resort (Car Use)

Travel is often an essential part of our business, but also a significant part of our carbon footprint. Our method of travel will be chosen on the basis of cost effectiveness and environmental impact.

We aim to reduce the need for our staff to travel, increase awareness of the impact of travel choices, and promote and encourage the use of more active or sustainable modes of transportation.

- 1. Local Transport**
Walking and cycling provide the healthiest and cheapest forms of transportation, with negligible carbon emissions and maximum flexibility. We will travel by foot or bike whenever time allows, and if the distance is less than **2.5 km.**
- 2. Increased Video Conferencing**
We seek to communicate via phone, email or video conferencing when partners work at significant distance. We will work to develop our video conferencing software to make it a viable communication method for group workshops, particularly for use with our online tools.
- 3. Public Transport Network**
We will make the most of the public transportation network where we operate, aiming for carbon-efficient travel whilst reducing congestion!
- 4. Cycle to Work**
Fast, inexpensive and good for us and the environment, cycling to work is a key way we will cut our emissions in cities. Our base, at Waverley Court, also has bicycle storage and showering facilities, and bicycle travel has a claimage allowance of 20p per mile.
- 5. UK and Europe by Rail**
Short haul flying creates **10 times** the emissions of the equivalent journey by rail. Unless train travel time adds more than **3 hours** or involves an extra night away from home, we will take the train.
- 6. Calculate Expenses and Emissions**
When claiming for travel expenses, departure and arrival points and the type of travel will be logged via our travel tool, claimexpenses.com. This will help us form a footprint of our travel-related emissions, which will enable us to report them and help us work on their minimisation. It will also allow us to act as a leader in the sector, and provide demonstrations for other arts organisations using the tool.
- 7. Long Haul Flying**
Sometimes flying is the only option; but as the form of transport producing the **highest levels of CO₂** emissions, air travel will only be used when absolutely necessary. We will also try to take non-stop flights instead of multiple short-haul stops to reduce our impact.
- 8. Minimal Taxi Use**
Some pre-planning should help keep our use of taxis to a minimum, and any taxis will ideally be shared, with more than one occupant when possible.
- 9. A Last Resort**
We will avoid using cars until all other travel option have been exhausted. The average car emits **over 2kg of CO₂ per litre** of fuel, or 230g of CO₂ per km. By contrast, a bus emits 50% less, and a train emits 75% less carbon for the same distance!



Travel & Transport - Key Take-Aways

Reducing Green House Gas emissions associated with travel **is complex** - particularly for long journeys, heavy goods, and travel to more isolated locations. How organisations address their travel and transport impacts will be very individual, but **climate justice** should be a consideration

Moving from transport fueled by fossil fuels to transport fueled by renewable energy **won't be enough** to reduce our travel impacts

Frequent **air travel** has the biggest impact, particularly long haul flights

Recording travel associated with what you do should be your first step

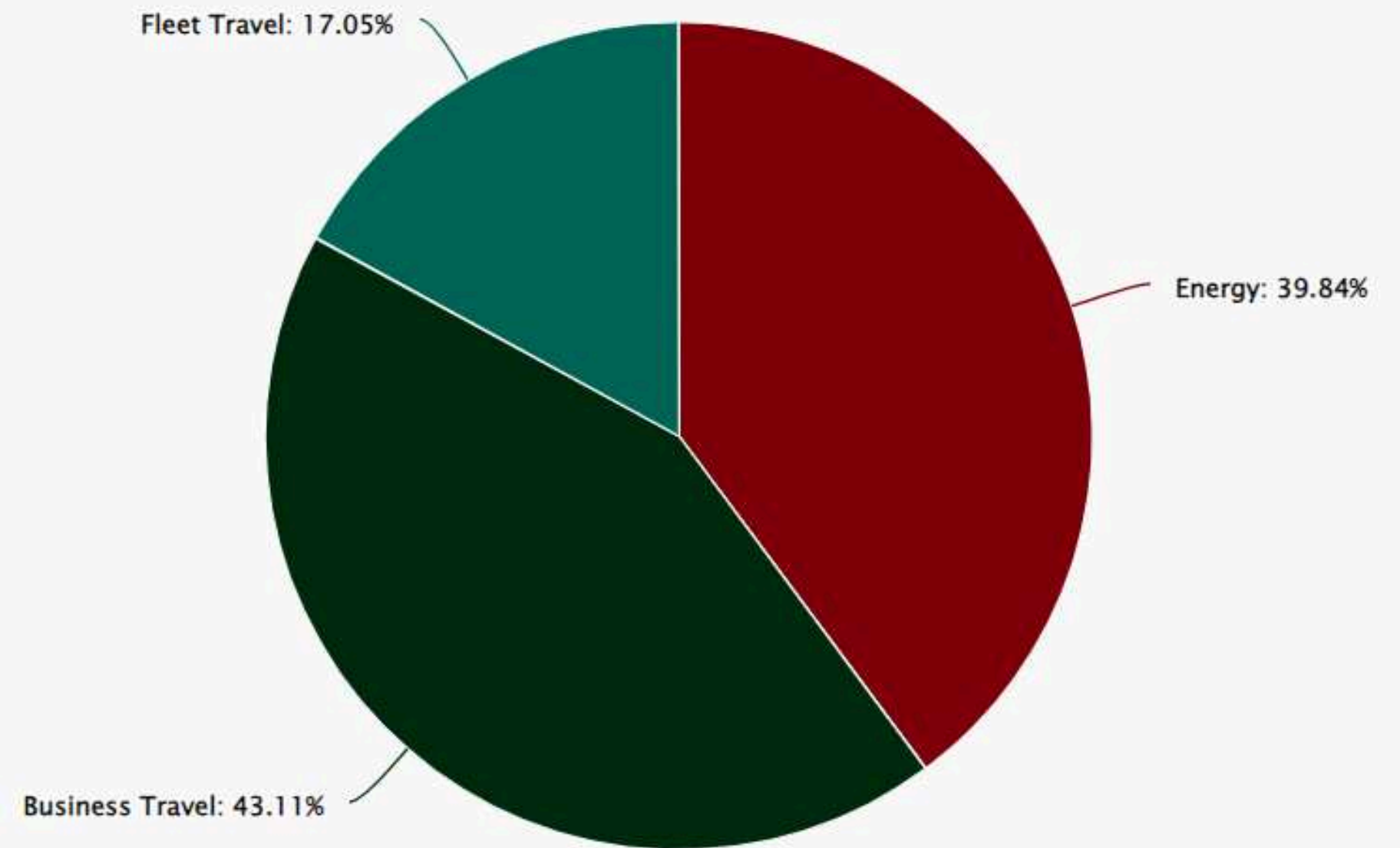
Creating a **SHORT travel policy**, with buy-in from staff, should be your second step.

Case Studies

Travel and Transport Emissions

Example: Irish resource organisation 2022

Energy: 39.84%
Business Travel: 43.11%
Fleet Travel: 17.05%



Travel and Transport Emissions

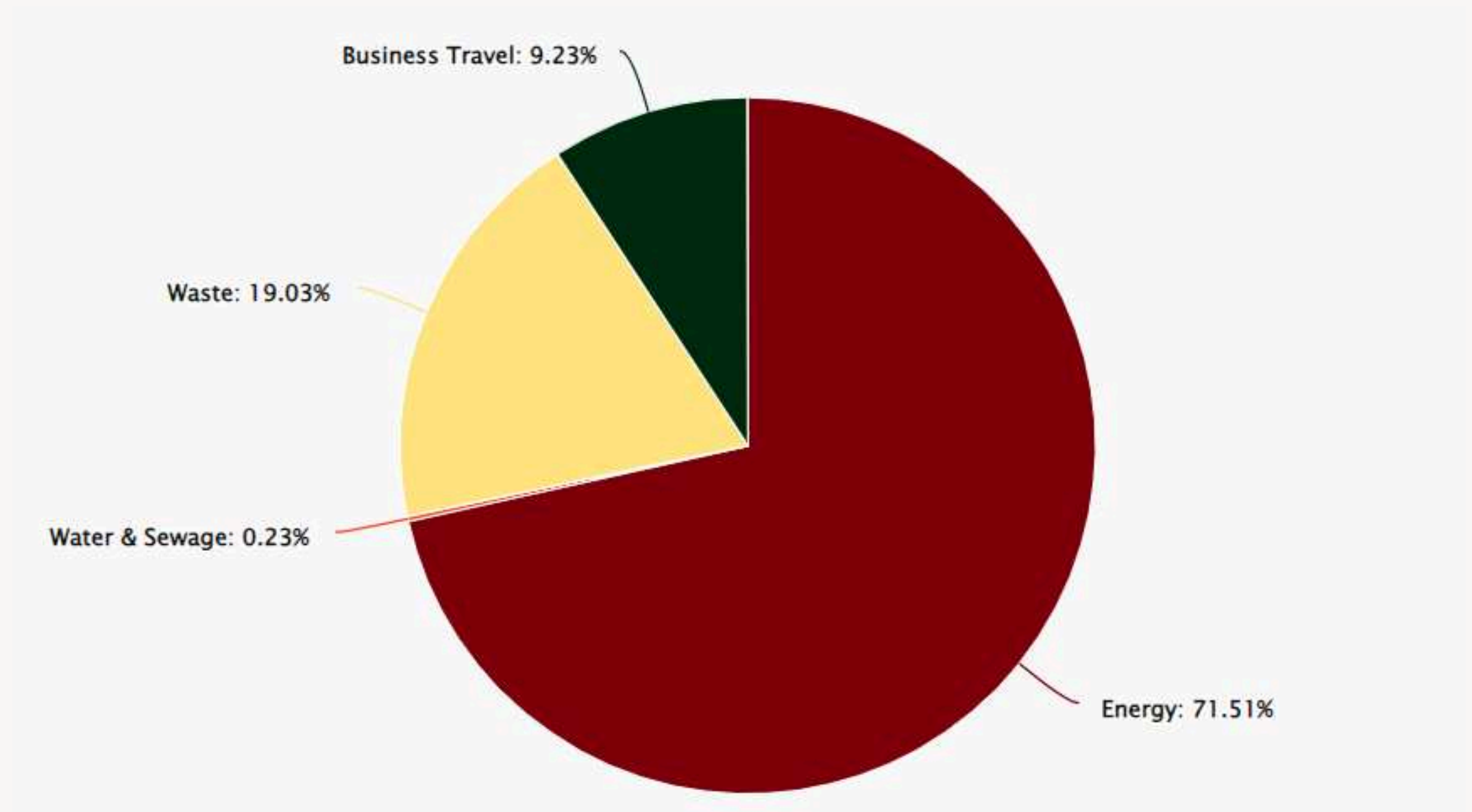
Example: Irish Theatre 2022

Energy: 71.51%

Business Travel: 9.23%%

Waste: 19.03%

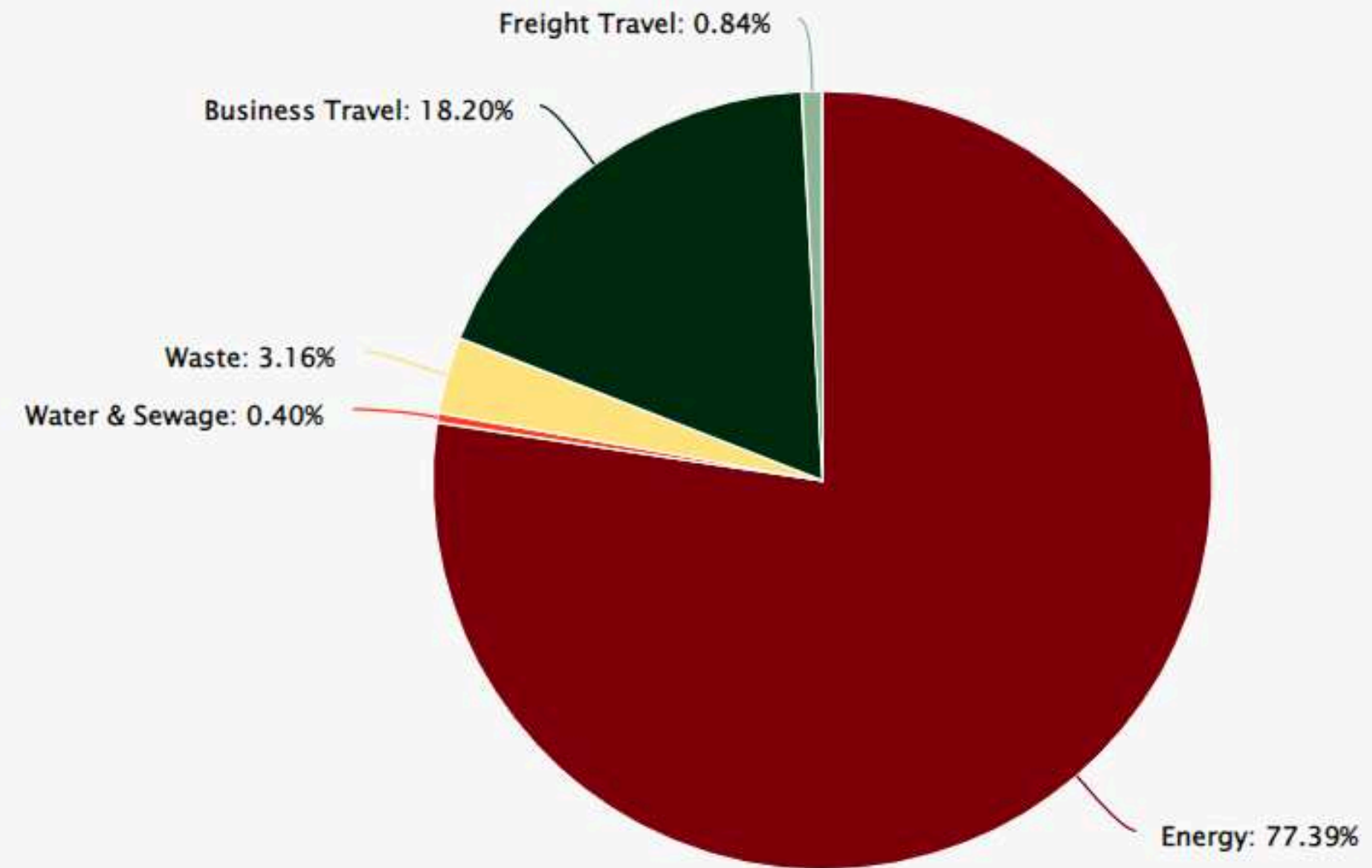
Water & Sewage: 0.23%



Travel and Transport Emissions

Example: Irish Gallery 2023

Energy: 77.39%
Business Travel: 18.20%
Freight Travel: 0.84%
Waste: 3.16%
Water & Sewage: 0.40%



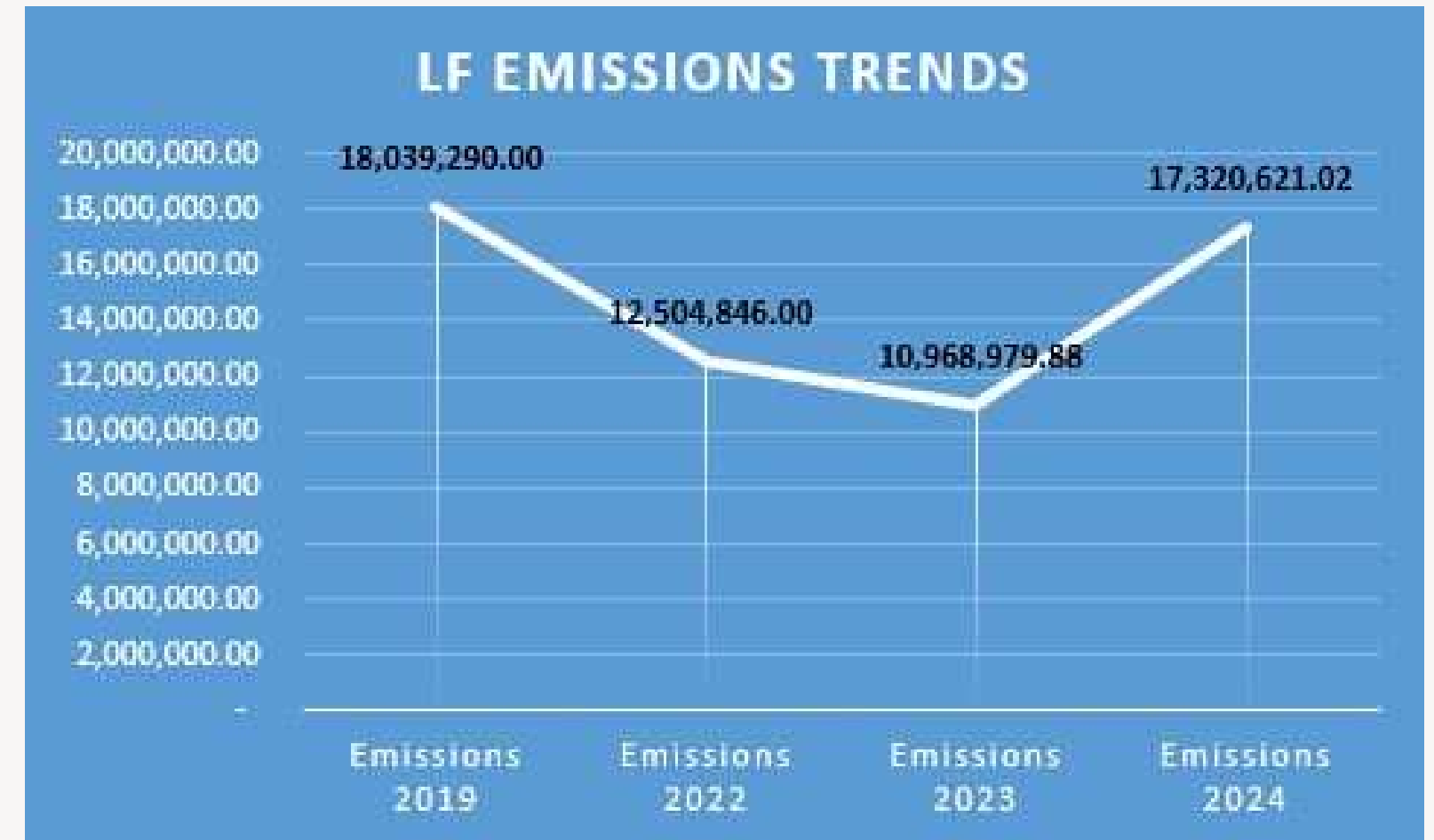
West Cork Music Impact Measurement

Audience Surveys

Here are some key takeaways from the audience surveys

- There is a growing awareness about the WCM Green Policy
- 78% across all 3 Festivals use a car to attend events
- Less than 20% across all 3 Festivals use public transport to come to the Festivals

International Travel measurementt



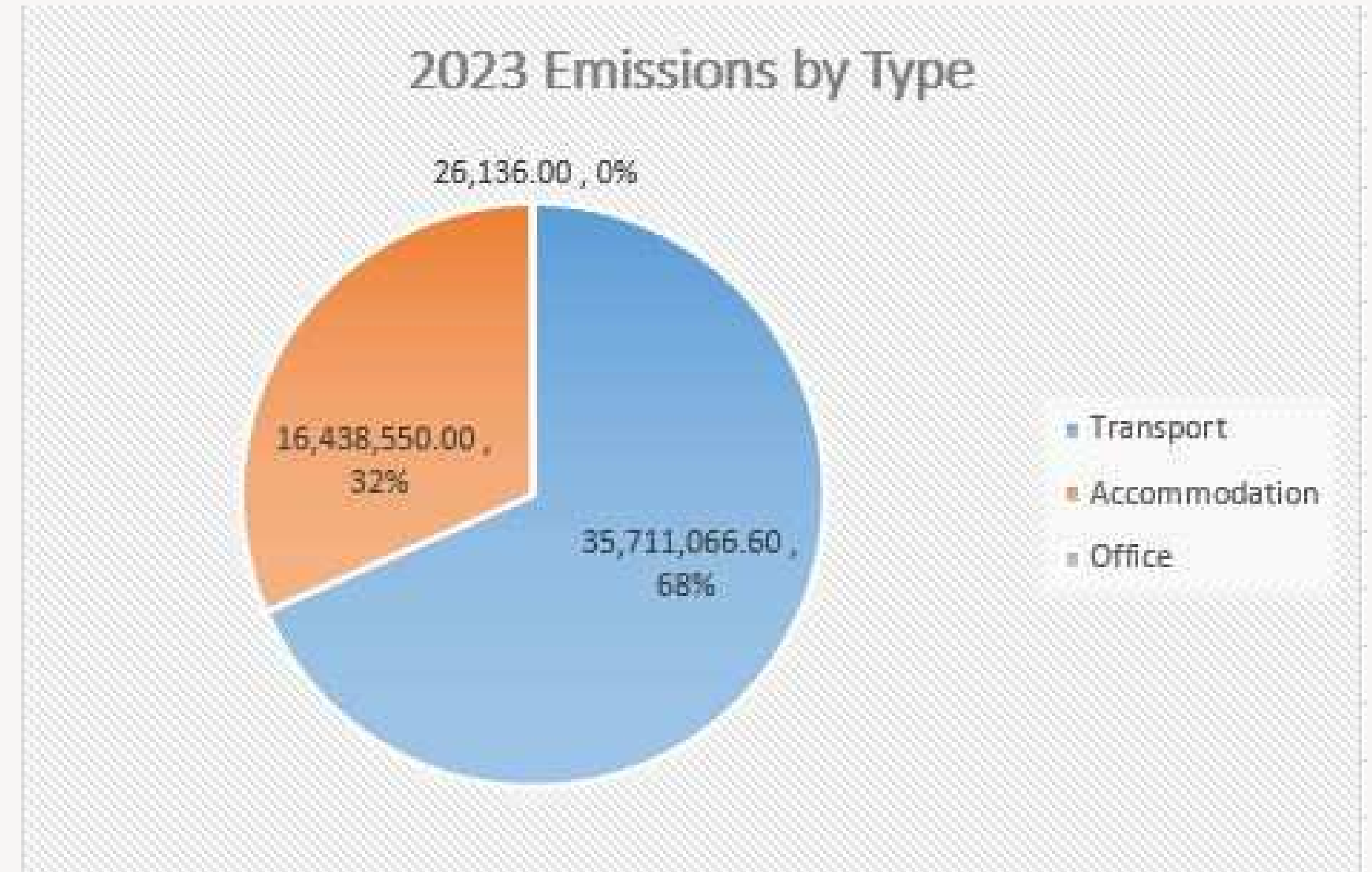
West Cork Music Green Policy: Slow Travel Case Study

West Cork Music 2023 Emissions

Transport - 68%

Accommodation - 32%

how difficult this area in particular will be to effect reductions, due to public transport infrastructure in Ireland, and the challenges for touring musicians to make a living while using slow travel.



West Cork Music Green Policy: Slow Travel Case Study

Actions

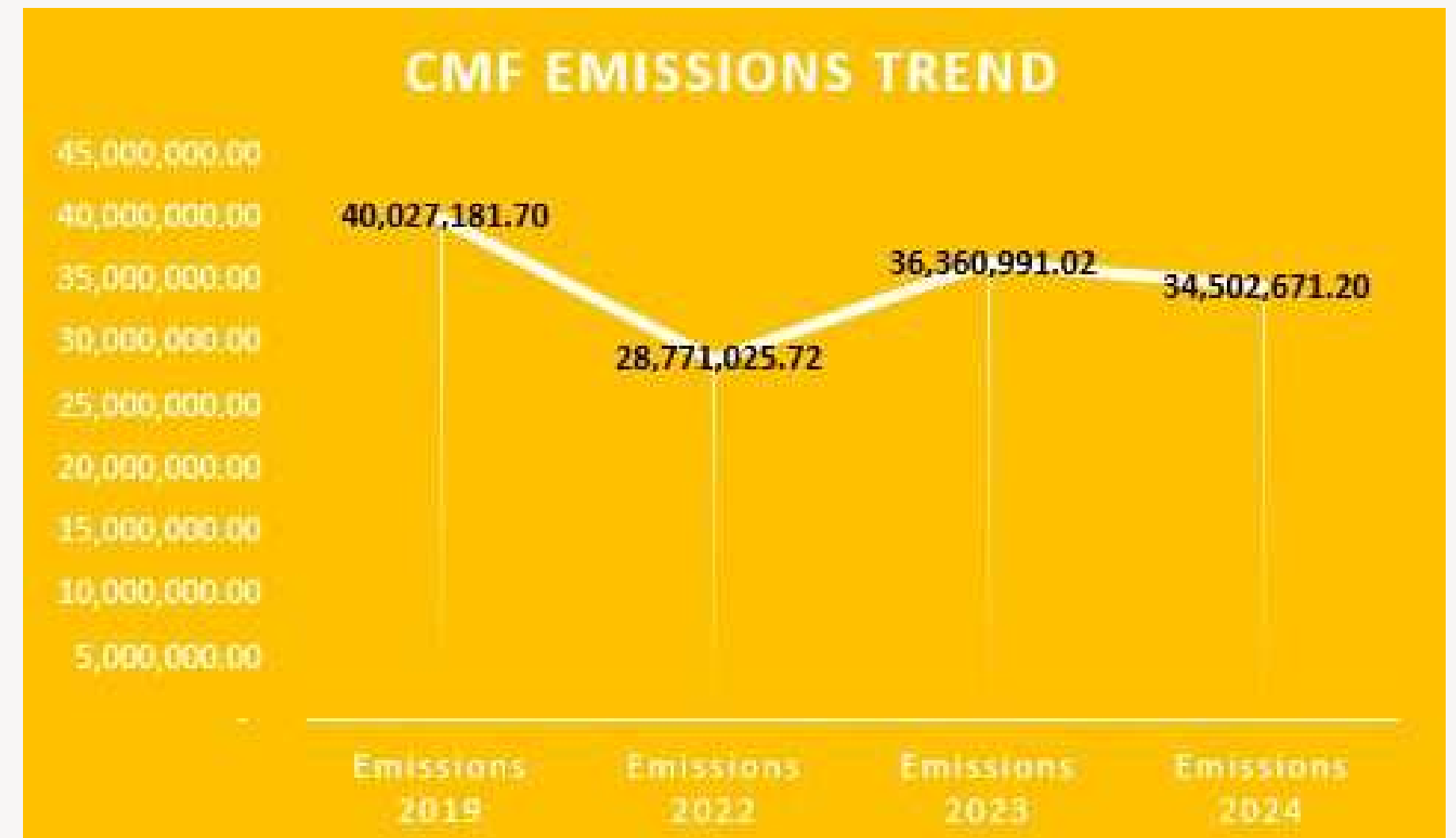
Raising Awareness among artists and audience

- Including articles around direct flights and slow travel in artist contracts
- Including sustainability questions in audience survey

Compared to 2022, more artists took transfer flights in 2023

In 2024 more artists took slow travel methods rather than multiple flights

WCM is actively working with artists to try and encourage direct flights to Ireland rather than multiple transfer flights.



West Cork Music Green Policy: Findings and Thoughts

- Audiences are not yet fully back, especially international audience - reluctance to put any obstacles in their way
- The best angle, as with musicians, is to encourage long stays to make up for carbon footprint and to publicise Local Links and bus schedules from Cork for day visitors
- Slow travel from Europe to West Cork is arduous, e.g. the lack of public transport link from Ferryport to Heuston enforces taxi link

“Re artist travel we are just implementing what St Magnus Festival initiated 20 years ago!”

- It is proving hard to wean musicians and their agents from cramming in as many gigs in as many festivals/concert halls as possible
- Slow travel is time costly barely covering normal fees, regular travel/transfers, accommodation
- Should sectoral quotas eventually have to be enforced, thus the need to know our footprint?
- At the mercy of Ireland’s infrastructural deficits

Galway International Arts Festival

Sustainability - Galway International Arts Festival

- *Establishing partnerships that will help us achieve our goals.*
- *Support and help us to reduce impact on the environment.*

Asking audience to plan their Festival attendance with sustainability in mind:

National attendees, take a bus or a train or share a ride to Galway.

International attendee, make use of flights that emits a lower carbon footprint.

Walk, use a bicycle, or use public transportation to venues at the Festival.

GIAF 2024 - Establishing partnerships to achieve its goals:

- Huge effort to promote public transport and active travel
- Teamed up with Travel Partner Bus Éireann on the provision and promotion of bus travel
- Operated late night buses according to event times



SlowMo - Rita Marcalo

SlowMo is choreography as a travelling gift; as a series of embodied travelling postcards.

In 2022 SlowMo traversed from Ireland through Europe via trains and ferries

Instead of being a finished show that tours, SlowMo turned the slow travel itself into the very framework for creating the work: at each city they passed through the company opened a letter previously sent to them (in Ireland) by a resident of the city they were travelling to; the letter told a story of that person's connection to the city the company happened to find themselves in, and the company translated it into choreography in situ.

In 2024 Instant Dissidence reversed the process: artists from Slovenia and France created dances as they slow travelled to Ireland, based on letters sent to them by Irish residents (funded by Creative Moves Europe).



Amber Bosteels, Gerard Headley, Thilde Andreasen and Diogo Santos performing SlowMo: Bristol - by Paul Blakemore

Ye Vagabonds - Slow Barge Tour

Funded by The Arts Council of Ireland, Waterways Ireland and Carlow County Council Arts Office

The floating tour, along the River Barrow, Royal and Grand Canal, August - September 2021

described by the band as “an exercise in slow touring – rejecting the planes, trains, and automobiles for a slow moving barge, as well as getting to know about the history, folklore, and song of some of Ireland’s lesser heralded gems.”



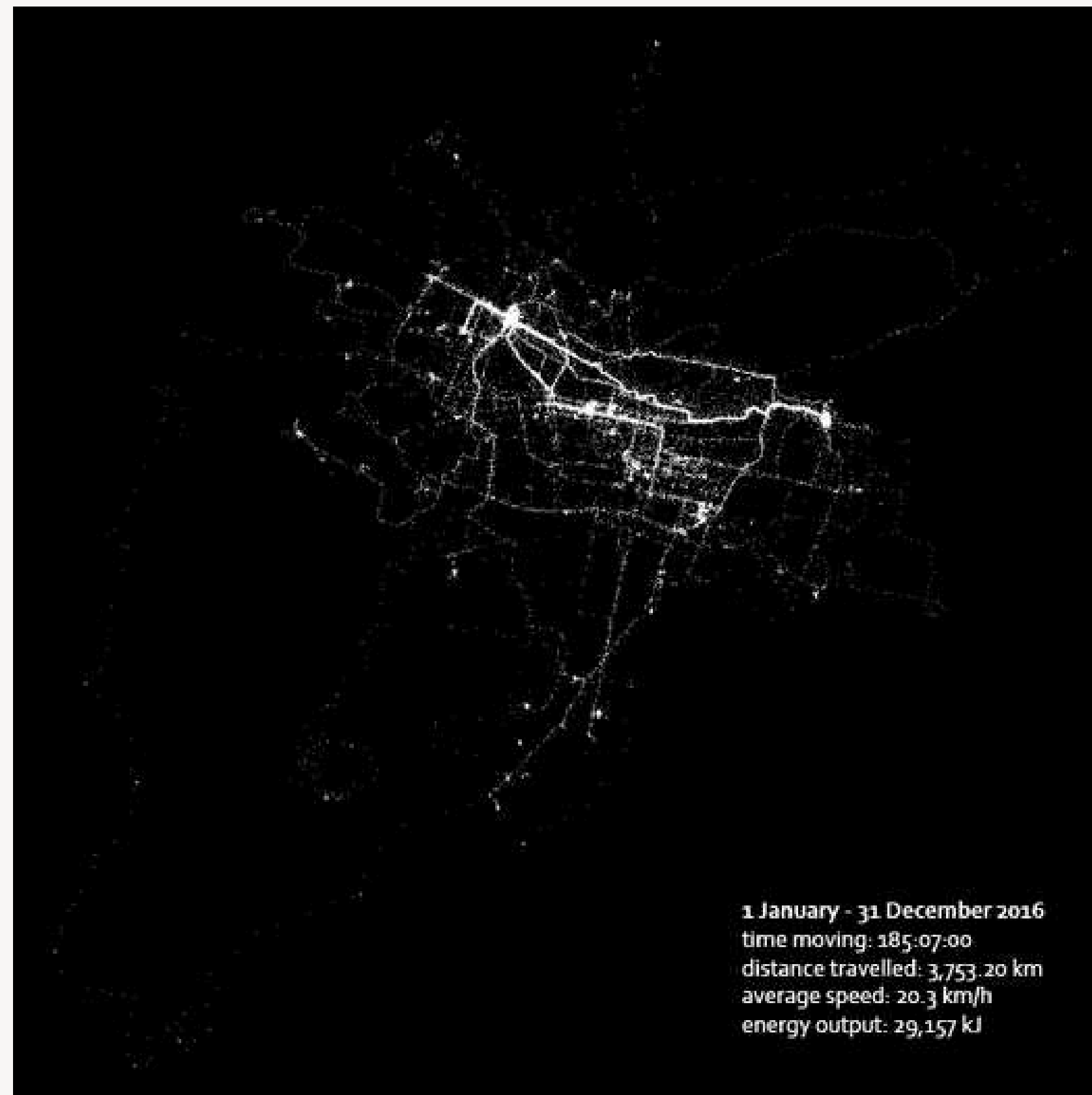
Ellie Harrison - The Glasgow Effect



Tonnes of carbon produced by the personal transportation of a 'professional artist'

This graph was first compiled as the central illustration of Harrison's 2019 book *The Glasgow Effect: A Tale of Class, Capitalism & Carbon Footprint* to illustrate the artist's increasing amount of travel in the years running...

EH Ellie Harrison / Dec 12, 2022



1 January - 31 December 2016
time moving: 185:07:00
distance travelled: 3,753.20 km
average speed: 20.3 km/h
energy output: 29,157 kJ

HOME Manchester Sustainable Travel Policy

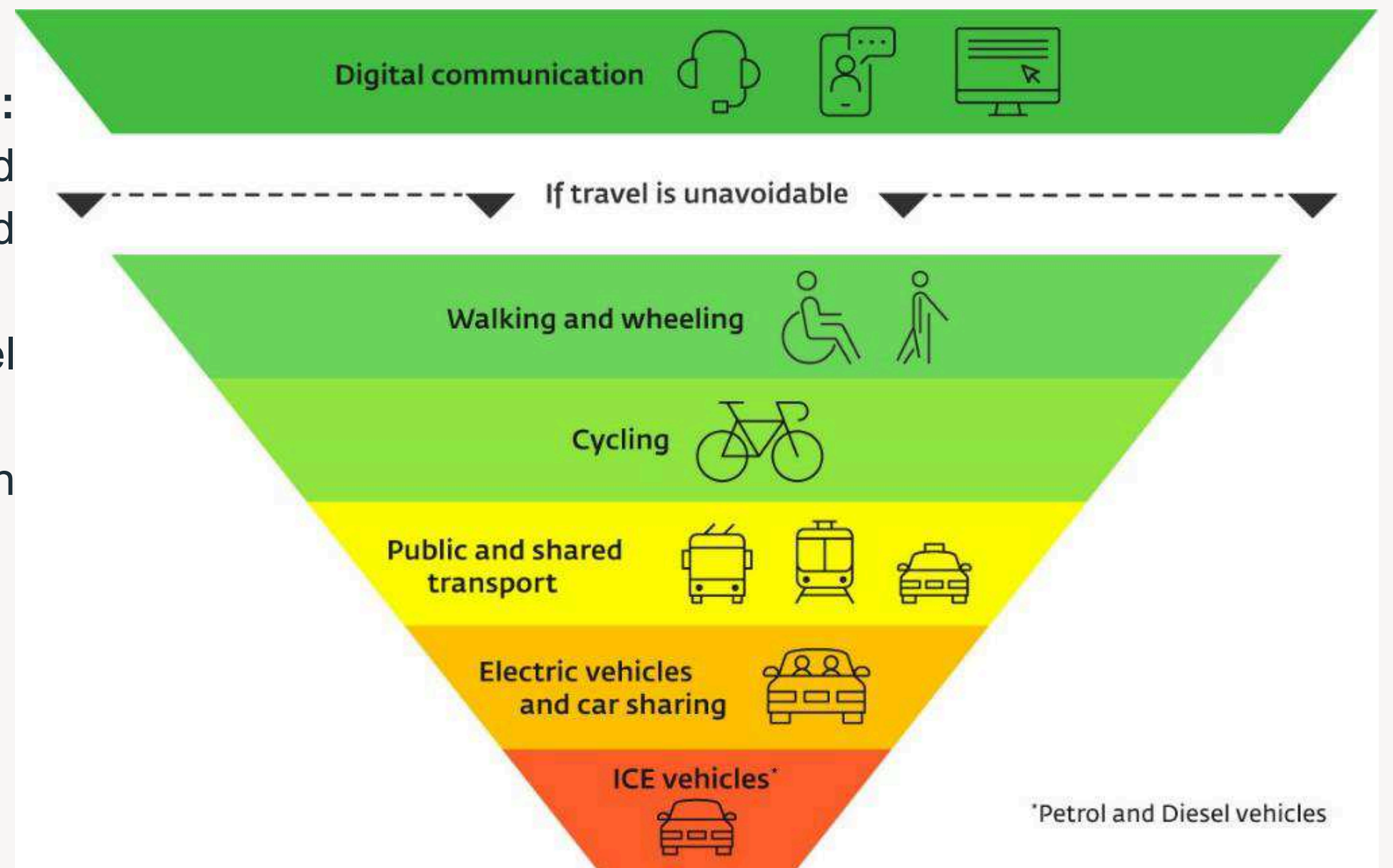
Partnerships:

Corridor Manchester Sustainable Travel Group:
Promote and support low-carbon initiatives in the area and be a driving force of positive, influential and sustained change.

TfGM (Transport for Greater Manchester) Travel Choices to advocate best practice for staff travel.

Greater Manchester's Clean Air ambitions in line with Zero Carbon Manchester 2038

Twice been awarded Gold in TfGM's Travel Choices Accreditation scheme in recognition of our efforts and commitments to help reduce congestion, enhance the health and wellbeing of our staff, and improve air quality in Greater Manchester



Manchester City Council - Travelling Sustainably

Stay-Grounded

Business as usual is not an option.

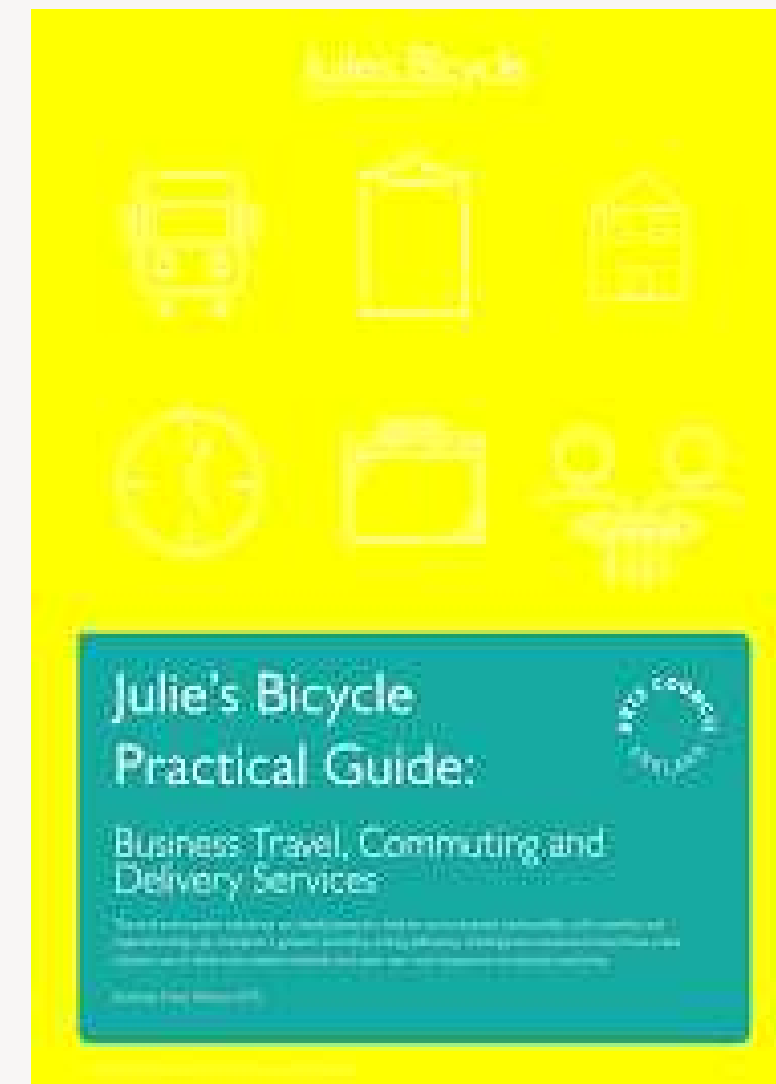
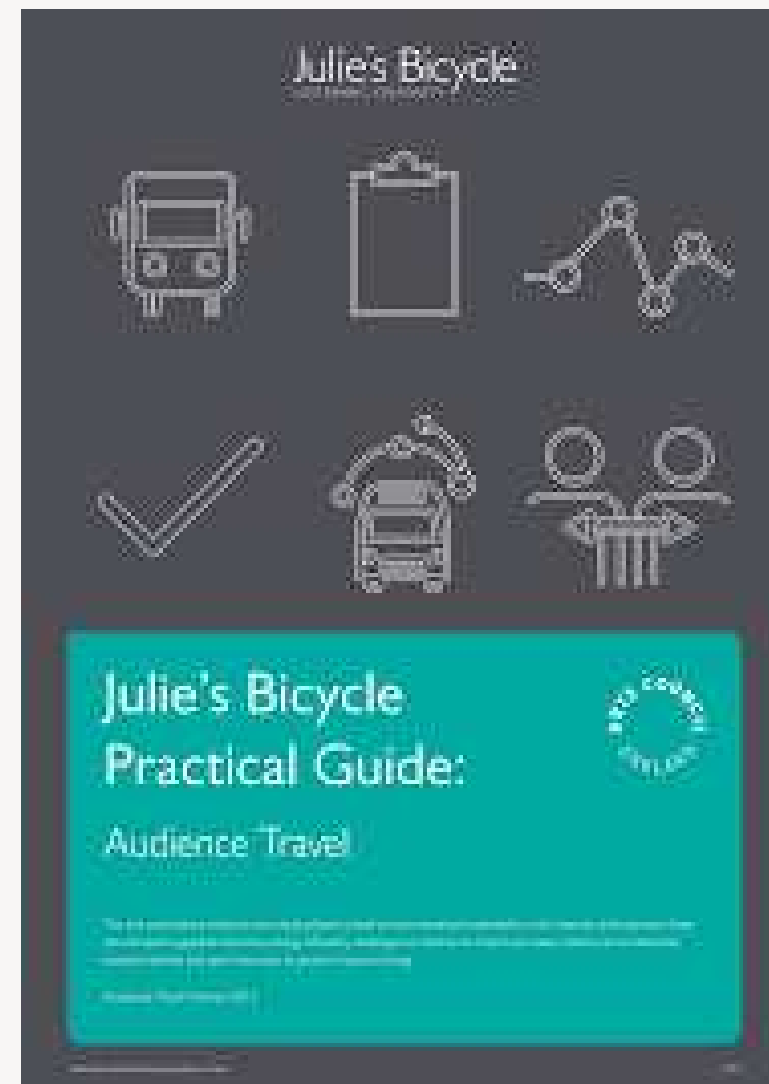
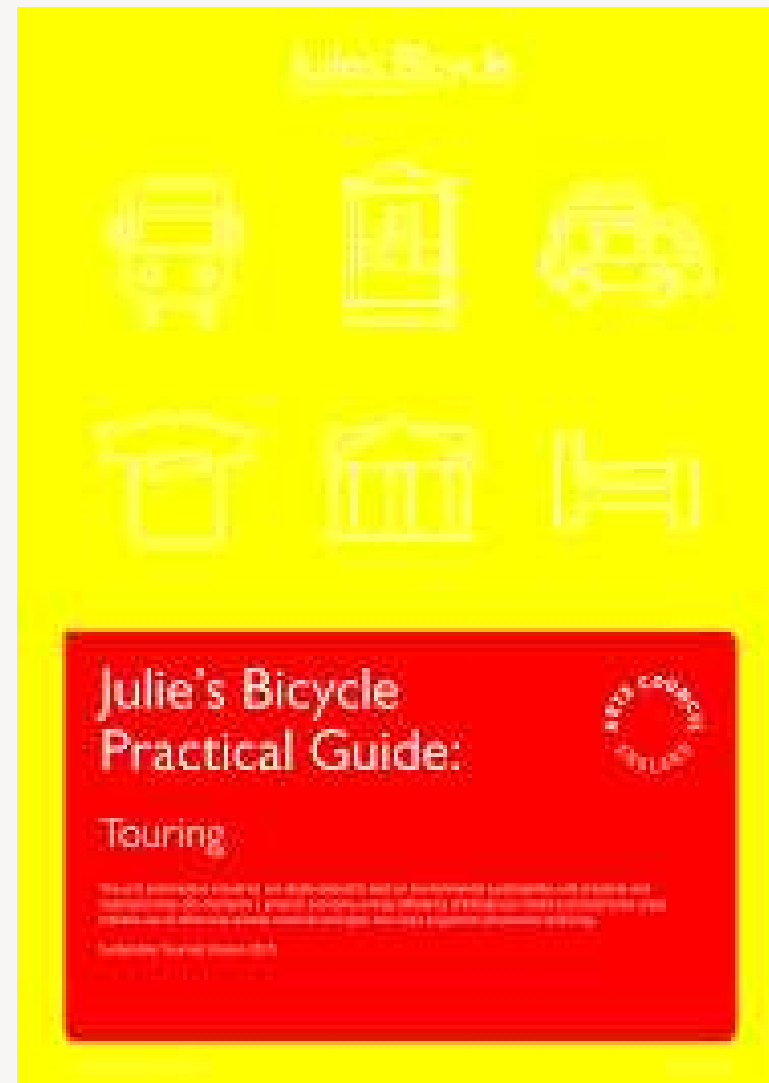
13 steps to transform transport, society and the economy to be just and environmentally sound.

1. A Just Transition
2. A shift to other modes of transport
3. An economy of short distances
4. Enabling changing habits and modes of living
5. Land rights and human rights
6. Climate justice
7. Strong political commitments
8. New airports and airport expansion - moratorium
9. Privileges for the aviation industry
10. Air travel industry marketing
11. Offsetting
12. Biofuels
13. The illusion of technological fixes



Resources

Julie's Bicycle Travel and Transport Resources



Julie's Bicycle Travel and Transport Resources

Business Travel Data Collection Template

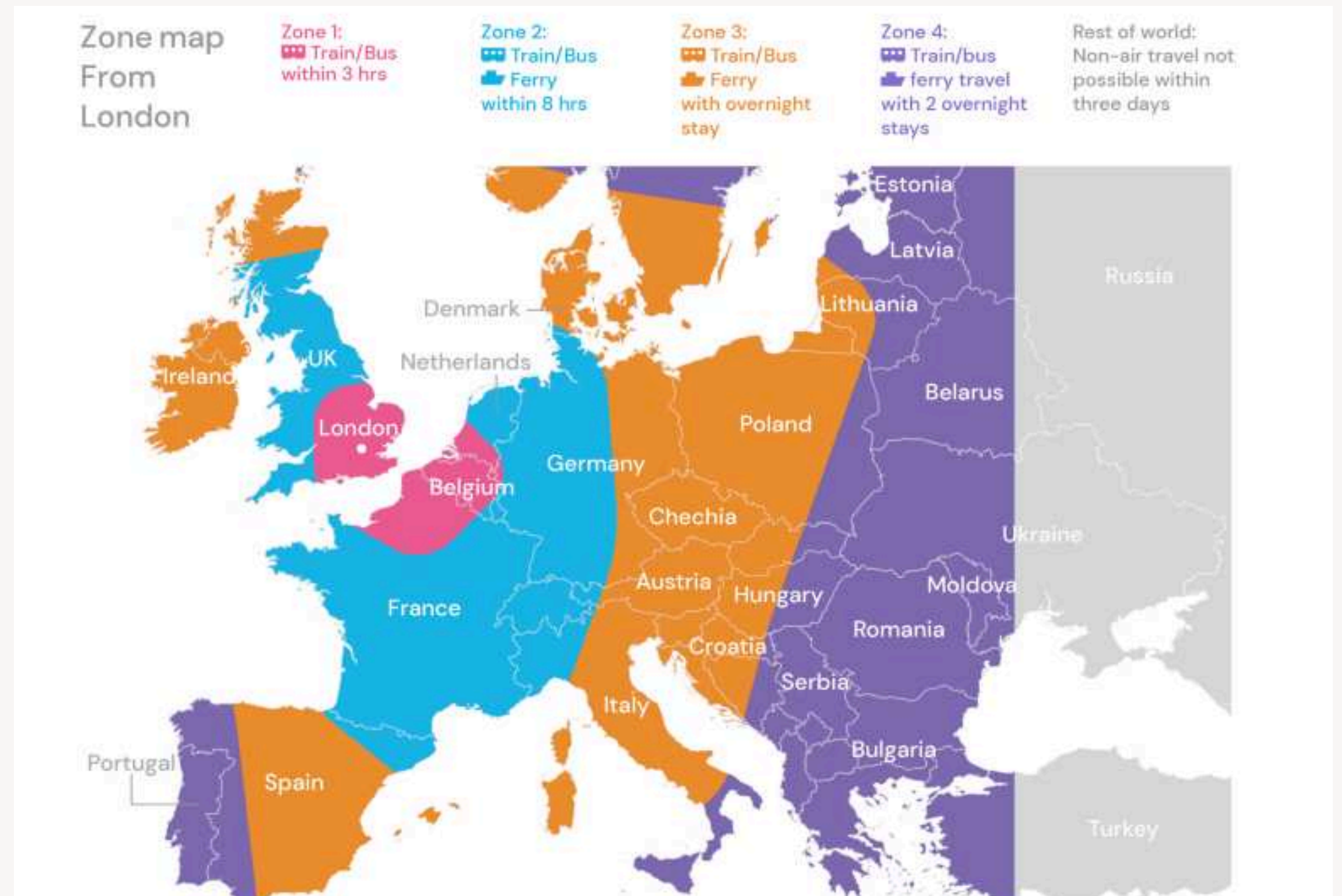
This worksheet can be used to gather your business travel data, as a basis for calculating your business travel emissions using e.g. Julie's Bicycle's Creative Climate Tools.



Gallery Climate Coalition - Climate Conscious Travel Policy and Guidelines

GCC's Climate Conscious Travel Policy and Guidance features:

- Climate Conscious Travel Decision Tree
- Train First Guidance and Zone Map
- Criteria Air Travel
- Carbon Budget for Travel
- Employee Incentives



Creative Carbon Scotland - Guide to measuring your travel

Provides advice on getting started with measuring travel and tools to help understand travel data.

- How to measure travel
- Gathering and aggregating travel data
- Audience travel
- Influence, communication and creating a travel policy



If you didn't join the previous sessions you can access the recordings and slides at:

<https://www.arts council.ie/ArtsinIreland/Climateaction/Arts Councilresourcesandsupports/>

Autumn series training webinars:

17 Sept 10-11am
Getting Started:
Festivals & Production
Companies

24 Sept 10-11am
Getting People on Board:
Festivals & Production
Companies

1 Oct 10-11am
Developing Action Plans:
Festivals & Production
Companies

22 Oct 10-11am
Travel and transport

15 Oct 10-11am
Audience travel

8 Oct 10-11am
Materials and procurement
Festivals & Production
Companies

29 Oct 10-11am
Content, programming and
communications

5 Nov 10-11am
Energy for festivals

12 Nov 10-11am
Climate adaptation

Q & A

Thank you!

